

The background of the entire page is a photograph of two white Suzuki outboard motors mounted on the stern of a boat. The boat is moving through the water, creating a large, white wake. The motors are in sharp focus, with the 'SUZUKI' name and the 'S' emblem clearly visible on their cowls. The overall scene is bright and dynamic, suggesting speed and performance.

**SUZUKI MARINE**  
**PARTS AND**  
**ACCESSORIES**  
**CATALOG**



**SUZUKI**  
**MARINE**  
**PARTS & ACCESSORIES**

Dear Customer,

The Suzuki Genuine Accessories Catalog provides information on the highest quality accessories, specific to your outboard engine and application. We strive to bring you only the highest quality parts to ensure your outboard will run flawlessly for years to come. We recommend only using Suzuki Genuine Accessories on your Suzuki outboard. We never compromise over quality and you shouldn't compromise your boating experience with anything but Suzuki Genuine Accessories. Suzuki is on the forefront of innovation and have the accessories to prove it. If you are thinking of bringing the foremost of technology to your boat, think Suzuki. Pair your Suzuki outboard with our dependable instruments and gauges, custom-engineered propellers, and durably designed rigging items for optimum performance and reliability. Take your time reading through our catalog, and don't hesitate to visit our website or an Authorized Suzuki Marine Dealer.

Thank you,















**Suzuki Parts & Accessories**

All information, illustrations, photographs and specifications contained in this catalog are based on the latest product information available at the time of publication. Due to improvements or other changes, there may be some discrepancies in this brochure. Suzuki reserves the right to make production changes at any time, without notice and without incurring any obligation to make the same or similar changes to accessories previously built or sold.

Note: Some items may require installation by an Authorized Suzuki Marine Dealer.

**SUZUKI MARINE USA, LLC**  
13521 Prestige Place, Tampa, FL 33635  
www.suzukimarine.com | www.suzuki.com  
©Suzuki Marine USA, LLC 2026, Published May 2026

# TABLE OF CONTENTS

	Suzuki Precision Control 2.0	1
	Digital Instrumentation	7
	Mechanical Controls	14
	Mechanical Engine Rigging	15
	Analog Instruments	17
	Steering	21
	Fuel System	23
	Propellers	25
	DF300B & DF350 Propellers and Tools	27
	Repair Kits & Anodes	29
	Ecstar Oils & Chemicals	31
	Maintenance & Care	33
	Engine Covers	35
	Application Charts	37
	Maintenance Kits	41

# SUZUKI PRECISION CONTROL 2.0

## Suzuki Precision Control 2.0 (S.P.C. 2.0) Electronic Throttle and Shift Systems

For DF115BG/140BG/150AP/175AP/200AP/250AP/250ATSS/300AP/300B/350A/300BMD/350AMD

### Suzuki Digital Foot Throttle

990C0-98L70

Digital foot throttle. For use with single digital engine only. Must be used in conjunction with existing Suzuki S.P.C. 2.0 digital control system.



Single Engine S.P.C. 2.0 Binnacle

67200-98L00

Single Engine S.P.C. 2.0 Binnacle Only



Multi-Engine S.P.C. 2.0 Binnacle

67200-98L10

Multi-Engine S.P.C. 2.0 Binnacle Only



Flush Mount S.P.C. 2.0 Control

67200-98L20

Flush Mount S.P.C. 2.0 Control Only



### Suzuki Precision Maneuvering

- Touch the future with Suzuki's Precision Maneuvering System and enjoy confident intuitive joystick control.
- Designed exclusively for Suzuki outboards with Suzuki Precision Controls, including the new DF115BG and DF140BG models as well as DF150AP, DF175AP, DF200AP, DF250AP, DF300AP, DF300B, and DF350A.
- Experience parallel parking without a thruster.
- Confidently pilot your boat around crowded docks, at waterfront restaurants and at the launch ramp.
- Now available for twin, triple, and quad installations.
- See your Local Authorized Suzuki SeaStar Installation Center for more details.



# SINGLE AND DUAL ENGINE S.P.C. 2.0 CONTROL KITS

## SINGLE ENGINE SPC 2.0 CONTROL KITS

			67000-98L06 1st Binnacle Kit	67000-98LA5 2nd Binnacle Kit	67000-98L15 Flush Mount Kit	67000-98LB1 2nd Flush Kit
1	67200-98L00	Binnacle Mount R/C Box	1	1	-	-
	67200-98L20	Flush Mount R/C Box	-	-	1	1
3	38500-93J90	Warning Buzzer	-	1	-	1
	09407-08401	Warning Buzzer Clamp	-	1	-	1
4	36770-98L05	Boat Control Module (BCM)	1	1	1	1
	36775-98L00	BCM Holder (L)	1	1	1	1
	36776-98L00	BCM Holder (R)	1	1	1	1
	33925-98L00	BCM Cushion	1	1	1	1
5	33926-98L00	Terminal Resistor	2	-	2	-
6	36625-98J10	Battery - Lead	1	-	1	-
7	36623-98L00	BCM #1 Wiring Harness	1	-	1	-
8	36627-98L10	Harness Assy, Emergency Switch Ext.	-	-	1	1
9	37140-98L00	Signal Converter	-	-	1	1
10	36622-98L00	Dual - Station Wiring Harness	-	1	-	1
11	36624-98L00	BCM #2 Wiring Harness	-	1	-	1
-	09403-13402	Harness Clamp	10	10	10	10
13A*	37100-98L00	Modular Ignition Switch	Choose 1*		Choose 1*	
	37100-98L10	Vertical Ignition Switch				
	37100-98L20	Horizontal Ignition Switch				
13B*	37290-98L00	Modular Push Button Ignition	Choose 1*			37290-98L00 (Purchase separately)
	37290-98L10	Vertical Push Button Ignition				
	37290-98L20	Horizontal Push Button Ignition				
14***	37803-98L00	Modular Emergency Switch	1***			
15	36620-98L00	21' Main Wiring Harness	Select required length, 1 required		Select required length, 1 required	
	36620-98L10	31' Main Wiring Harness				
16	36620-98L20	6.5' Main Harness Extension	Select if necessary			
17	37860-98L00	Troll Mode Switch	Optional			
18	36627-98L00	R/C Extension Harness			1****	1****
19	990C0-98L70	Digital Foot Throttle	Must be used in conjunction with existing SPC 2.0 control, single engine only			

\*Switch panels are sold separately, select type \*\*Push button ignition switches for 2nd station only  
 \*\*\* Required when using 37100-98L00 or 37290-98L00 with binnacle kit. Flush mount kit has integrated emergency stop on control  
 \*\*\*\*Required when using Flush Mount Control kit

## DUAL ENGINE S.P.C. 2.0 CONTROL KITS

			67000-98L25 1st Station Kit	67000-98LC5 2nd Station Kit
1	67200-98L10	Binnacle Remote Control Box	1	1
2	37120-98L00	Control Panel	1	1
3	38500-93J90	Warning Buzzer	1	2
	09407-08401	Warning Buzzer Clamp	1	2
4	36770-98L05	Boat Control Module (BCM)	2	2
	36775-98L00	BCM Holder (L)	2	2
	36776-98L00	BCM Holder (R)	2	2
	33925-98L00	BCM Cushion	2	2
5	33926-98L00	Terminal Resistor	3	-
6	36625-98J10	Battery - Lead	1	-
7	36623-98L30	BCM # 1 Wiring Harness	1	-
10	36622-98L00	Dual - Station Wiring Harness	-	1
11	36624-98L10	BCM #2 Wiring Harness	-	1
-	09403-13402	Harness Clamp	15	10
-	36612-98J20	Counter Rotation Adapter	1	-
13A*	37100-98L00	Modular Ignition Switch	Choose 1*	
	37100-98L10	Vertical Ignition Switch		
	37100-98L20	Horizontal Ignition Switch		
13B*	37290-98L00	Modular Push Button Ignition		Choose 1**
	37290-98L10	Vertical Push Button Ignition		
	37290-98L20	Horizontal Push Button Ignition		
14***	37803-98L00	Modular Emergency Switch	1***	1***
15	36620-98L00	21' Main Wiring Harness	Select required length, 2 required	Select required length, 2 required
	36620-98L10	31' Main Wiring Harness		
16	36620-98L20	6.5' Main Harness Extension	Select if necessary	
17	37860-98L00	Troll Mode Switch	Optional	
18	36627-98L00	R/C Extension Harness	Select if necessary	

\*Switch panels are sold separately, select type \*\*Push button ignition switches for 2nd station only \*\*\* Required when using 37100-98L00 or 37290-98L00

# TRIPLE AND QUAD ENGINE S.P.C. 2.0 CONTROL KITS

## TRIPLE ENGINE S.P.C. 2.0 CONTROL KITS

			67000-98L33 1st Station Kit	67000-98LD4 2nd Station Kit
1	67200-98L10	Binnacle Remote Control Box	1	1
2	37120-98L10	Control Panel	1	1
3	38500-93J90	Warning Buzzer	1	2
	09407-08401	Warning Buzzer Clamp	1	2
4	36770-98L05	Boat Control Module (BCM)	2	2
	36775-98L00	BCM Holder (L)	2	2
	36776-98L00	BCM Holder (R)	2	2
	33925-98L00	BCM Cushion	2	2
5	33926-98L00	Terminal Resistor	3	-
6	36625-98J10	Battery - Lead	1	-
7	36623-98L30	BCM # 1 Wiring Harness	1	-
10	36622-98L00	Dual - Station Wiring Harness	-	1
11	36624-98L10	BCM #2 Wiring Harness	-	1
12	36621-98L00	Engine Wiring Harness	1	-
-	09403-13402	Harness Clamp	18	10
-	36612-98J20	Counter Rotation Adapter	1	-
13A*	37100-98L00	Modular Ignition Switch	Choose 1*	
	37100-98L10	Vertical Ignition Switch		
	37100-98L20	Horizontal Ignition Switch		
13B*	37290-98L00	Modular Push Button Ignition		Choose 1**
	37290-98L10	Vertical Push Button Ignition		
	37290-98L20	Horizontal Push Button Ignition		
14***	37803-98L00	Modular Emergency Switch	1***	1***
15	36620-98L00	21' Main Wiring Harness	Select required length, 2 required	Select required length, 2 required
	36620-98L10	31' Main Wiring Harness		
16	36620-98L20	6.5' Main Harness Extension	Select if necessary	
17	37860-98L00	Troll Mode Switch	Optional	
18	36627-98L00	R/C Extension Harness	Select if necessary	
19	36627-98L20	CAN Extension Harness	Select if necessary	

\*Switch panels are sold separately, select type \*\*Push button ignition switches for 2nd station only \*\*\* Required when using 37100-98L00 or 37290-98L00

## QUADRUPLE ENGINE S.P.C. 2.0 CONTROL KITS

			67000-98L44 1st Station Kit	67000-98LE4 2nd Station Kit
1	67200-98L10	Binnacle Remote Control Box	1	1
2	37120-98L20	Control Panel Port	1	1
	37120-98L30	Control Panel STBD	1	1
3	38500-93J90	Warning Buzzer	1	2
	09407-08401	Warning Buzzer Clamp	1	2
4	36770-98L05	Boat Control Module (BCM)	2	2
	36775-98L00	BCM Holder (L)	2	2
	36776-98L00	BCM Holder (R)	2	2
	33925-98L00	BCM Cushion	2	2
5	33926-98L00	Terminal Resistor	3	-
6	36625-98J10	Battery - Lead	1	-
7	36623-98L40	BCM # 1 Wiring Harness	1	-
10	36622-98L00	Dual - Station Wiring Harness	-	1
11	36624-98L20	BCM #2 Wiring Harness	-	1
12	36621-98L00	Engine Wiring Harness	2	-
-	09403-13402	Harness Clamp	20	15
-	36612-98J20	Counter Rotation Adapter	2	-
13A*	37100-98L00	Modular Ignition Switch	Choose 1*	
	37100-98L10	Vertical Ignition Switch		
	37100-98L20	Horizontal Ignition Switch		
13B*	37290-98L00	Modular Push Button Ignition		Choose 1**
	37290-98L10	Vertical Push Button Ignition		
	37290-98L20	Horizontal Push Button Ignition		
14***	37803-98L00	Modular Emergency Switch	1***	1***
15	36620-98L00	21' Main Wiring Harness	Select required length, 2 required	Select required length, 2 required
	36620-98L10	31' Main Wiring Harness		
16	36620-98L20	6.5' Main Harness Extension	Select if necessary	
17	37860-98L00	Troll Mode Switch	Optional	
18	36627-98L00	R/C Extension Harness	Select if necessary	
19	36627-98L20	CAN Extension Harness	Select if necessary	

\*Switch panels are sold separately, select type \*\*Push button ignition switches for 2nd station only \*\*\* Required when using 37100-98L00 or 37290-98L00

# SUZUKI PRECISION CONTROL 2.0

First and second station ignition switches. Featuring a gloss black face with concealed screws for a cleaner and more luxurious finish.

For DF115BG/140BG/150AP/175AP/200AP/250AP/250ATSS/300AP/300B/350A/ 300BMD/350AMD.

## 1ST STATION KEYED IGNITION SWITCHES

<b>37100-98L00</b>	Modular Keyed Ignition
<b>37100-98L10</b>	Vertical Keyed Ignition w/ Emergency Stop
<b>37100-98L20</b>	Horizontal Keyed Ignition w/ Emergency Stop



## MODULAR EMERGENCY STOP

<b>37803-98L00</b>	Required with keyed or push button modular ignition switch
--------------------	--



## 2ND STATION PUSH BUTTON IGNITION SWITCHES

<b>37290-98L00</b>	Modular Push Button Ignition
<b>37290-98L10</b>	Vertical Push Button Ignition w/ Emergency Stop
<b>37290-98L20</b>	Horizontal Push Button Ignition w/ Emergency Stop

## KEYLESS START SYSTEM

<b>37105-98L12</b>	Keyless Kit, Push button switch required
--------------------	--



## CONTROL PANELS

<b>37120-98L00</b>	Dual Engine Control Panel (Pictured)
<b>37120-98L10</b>	Triple Engine Control Panel
<b>37120-98L20</b>	Quad Control Panel - Port
<b>37120-98L30</b>	Quad Control Panel - Starboard



## Main Wiring Harnesses

Main Wiring Harness. Order length as needed for rigging applications.

## Battery Sub-Lead

For use with SPC / Digital Models.

<b>36625-98J10</b>	7' (2.2m)
<b>36625-98J20</b>	20' (6.1m)



## Battery Isolator Lead Sets

Used for charging auxiliary battery.

<b>33830-98J02</b>	DF300 2007-2011 only
<b>33830-98J11</b>	DF150A/175A/200A/150AP/175AP/200AP/300AP/350A



## Replacement Engine Wiring Harness

<b>36621-98L00</b>	Triple and Quadruple Engine Wiring Harness
--------------------	--



<b>36620-98L00</b>	21' (6.5m) Wiring Harness
<b>36620-98L10</b>	31' (9.5m) Wiring Harness
<b>36620-98L20</b>	6.5' (2m) Wiring Harness Extension (Optional; order as needed)



## BCM Harness

<b>36623-98L00</b>	BCM Harness No. 1 for Single Engine, First Station
<b>36623-98L30</b>	BCM Harness No. 1 for Dual or Triple Engine, First Station
<b>36624-98L00</b>	BCM Harness No. 2 for Single Engine, Second Station
<b>36624-98L10</b>	BCM Harness No. 2 for Dual or Triple Engine, Second Station
<b>36623-98L40</b>	BCM Harness No. 1 for Quadruple Engine, First Station
<b>36624-98L20</b>	BCM Harness No. 2 for Quadruple Engine, Second Station

# DIGITAL INSTRUMENTATION

## Multi-Function Gauge – SMG4

When you're on the water, it's vital that you can get the information you need about your engine's condition and performance whenever you need it. That's exactly the thinking behind our Suzuki Multi-Function Gauge.

### ANALOG TACHOMETER & SPEED MODE



\* Speed sensor or GPS module will be required in order to display the speed.

### DIGITAL TACHOMETER MODE



- Fuel flow (instantaneous)
- Mileage (instantaneous and average)
- Trip time, Trip distance

### All the Information in One Place

This brilliantly simple technology gives you the right information at the right time, all on one user friendly, highly intuitive screen. You can view a wide range of important information including engine RPM, speed, trim angle, engine temp, and fuel economy. You'll also receive alerts from the engine's sensors and warning systems. All you need for effortless and relaxing boating in one simple, reassuring, and reliable device.

### DIGITAL TACHOMETER & SPEED



### ANALOG TACHOMETER & SPEED



### ANALOG SPEED (NIGHT)



### FUEL MODE



### TROLL MODE



## FEATURES

### MULTILINGUAL MENU



SMG4 is now available in 13 languages.

### AUTOMATIC TRIM



Automatically adjusts trim based on engine RPM

### DEMO MODE



Pre-installed data demonstrates gauge functionality. Great for boat shows!

# SUZUKI MULTIFUNCTION GAUGE ACCESSORIES

## NMEA 2000 Cable Kit

This cable kit includes parts needed to make a basic NMEA 2000 backbone. A backbone is required for speed data to be displayed on SMG using either a GPS antenna or paddle wheel transducer. Kit contents in table below.

**990C0-88L00-KIT**

NMEA 2000 Backbone Cable Kit		
Part Number	Part Name	990C0-88L00-KIT
990C0-88104	2' N2K Cable	1
990C0-88112	N2K Power Cable / T	1
990C0-88110	Backbone T	1
990C0-88113	Terminator (F)	1
990C0-88114	Terminator (M)	1

## SMG Sun Cover

Replacement white plastic cover for SMG.

**34211-96L00**

## Speed Data Sources (Optional)

SMG must have a speed source to display speed data. This can be achieved by adding a GPS antenna or paddle wheel transducer to the backbone if no other speed source is available. Simply use the included N2K Tee to extend your backbone and plug it in!

**990C0-88122** GPS Antenna

**990C0-88317** Paddle Wheel

## Single and Dual Mechanical Engine SMG Requirements

See below chart for required SMG components for dual mechanical engines. Please order components separately.

Components Chart - Single and Dual Mechanical Engines		Single Engine Qty Required	Dual Engine Qty Required
<b>34011-96L45</b>	Suzuki Multifunction Gauge (SMG)	1	2
<b>36665-87L10</b>	Mechanical Engine Adapter	-	1
<b>990C0-88104</b>	2' Backbone Cable	-	2
<b>990C0-88112</b>	Power Cable	-	1
<b>990C0-88110</b>	Backbone T	-	2
<b>990C0-88113</b>	Female Terminator	-	1
<b>990C0-88114</b>	Male Terminator	-	1
<b>36661-96L30</b>	Mech Gauge Adapter	1	2

## COMPONENTS LIST

<b>1 Multifunction Gauge</b>		<b>2 Mechanical Multi Engine Adapter</b>		<b>3 Extension Wire</b>		<b>1 34011-96L45</b> Multifunction Gauge
<b>4 2' N2K Cable</b>		<b>5 N2K Power Cable / T</b>		<b>6 Backbone T</b>		<b>2 36665-87L10</b> Mechanical Multi Engine Adapter
<b>7 Terminator (F)</b>		<b>8 Terminator (M)</b>		<b>9 N2K Cable</b>		<b>3 36682-92E00</b> Extension wire
<b>11 Gauge Adapter</b>		<b>13a Paddle Wheel/Speed Sensor</b>				<b>990C0-88104</b> 2' N2K Cable
		<b>13b GPS Antenna w/ Compass</b>				<b>4 990C0-88105</b> 6' N2K Cable
						<b>990C0-88107</b> 15' N2K Cable
						<b>990C0-88108</b> 25' N2K Cable
						<b>5 990C0-88112</b> N2K Power Cable / T
						<b>6 990C0-88110</b> Backbone T
						<b>7 990C0-88113</b> Terminator (F)
						<b>8 990C0-88114</b> Terminator (M)
						<b>990C0-88104</b> 2' N2K Cable
						<b>990C0-88105</b> 6' N2K Cable
						<b>9 990C0-88107</b> 15' N2K Cable
						<b>990C0-88108</b> 25' N2K Cable
						<b>10 36666-96L00</b> Gauge Power Adapter (dual station)
						<b>36661-96L20</b> Gauge Adapter (SPC 1.0 Only)
						<b>11 36661-96L30</b> Gauge Adapter (Mechanical Engines)
						<b>12a 36667-96L00</b> Gauge Adapter (SPC 2,3,4)
						<b>12b 36667-96L30</b> Gauge Adapter for tanks 3-4
						<b>13a 990C0-88317</b> Paddle Wheel / Speed Sensor
						<b>13b 990C0-88122</b> GPS Antenna w/ Compass
						<b>14 36667-96L11</b> 2nd Gauge Adapter
						<b>15 36665-96L00</b> Dual Station Adapter
						<b>16 36667-96L20</b> Extension wire
						<b>17 36660-89L02</b> Adapter for use with DF9.9B - DF30A



# SUZUKI PRECISION CONTROL 2.0 SINGLE OR DUAL

Connecting an SMG to SPC 2.0 is now easier than ever! SMG now plugs directly in to the BCM harness, eliminating the need for an extra adapter harness. As an option, if you also require speed data to be displayed, also purchase a NMEA2000 (N2K) starter kit and a speed source.

## SINGLE

No.	Part Name	Part Number	Qty.	
1	Suzuki Multifunction Gauge	34011-96L45	1	SMG directly plugs in to BCM Harness
4	2' N2K Cable	990C0-88L00-KIT*	1	Part number 990C0-88104, included in N2K Kit
6	N2K Power Cable			Part number 990C0-88112, included in N2K Kit
7	N2K Tee			Part Number 990C0-88110, included in N2K Kit
9	Terminator (F)			Part number 990C0-88113, included in N2K Kit
10	Terminator (M)			Part number 990C0-88114, included in N2K Kit
18	Paddle Wheel Sensor	990C0-88317	1	Choose Either (Optional, only if speed data is required)
	GPS Module	990C0-88122		
19	BCM Harness #1	36623-98L00	-	Included in SPC 2.0 Control Kits
27	Terminal Resistor	33926-98L00	-	Included in SPC 2.0 Control Kits

\*Only required if adding a speed source

No.	Part Name	Part Number	Qty.	
1	Suzuki Multifunction Gauge	34011-96L45	2	SMG directly plugs in to BCM Harness
4	2' N2K Cable	990C0-88L00-KIT*	1	Part number 990C0-88104, included in N2K Kit
6	N2K Power Cable			Part number 990C0-88112, included in N2K Kit
7	N2K Tee			Part Number 990C0-88110, included in N2K Kit
9	Terminator (F)			Part number 990C0-88113, included in N2K Kit
10	Terminator (M)			Part number 990C0-88114, included in N2K Kit
5	15' N2K Cable	990C0-88107	1	Choose required length from station 1 to station 2
	25' N2K Cable	990C0-88108		
18	Paddle Wheel Sensor	990C0-88317	1	Choose Either (Optional, only if speed data is required)
	GPS Module	990C0-88122		
19	BCM Harness #1	36623-98L00	-	Included in SPC 2.0 Control Kits
27	Terminal Resistor	33926-98L00	-	Included in SPC 2.0 Control Kits

\*Only required if adding a speed source

## Speed Data Sources (Optional)

SMG must have a speed source to display speed data. This can be achieved by adding a GPS antenna or paddle wheel transducer to the backbone if no other speed source is available. Simply use the included N2K Tee to extend your backbone and plug it in!

990C0-88122	GPS Antenna	990C0-88317	Paddle Wheel
-------------	-------------	-------------	--------------

## DUAL

No.	Part Name	Part Number	Qty.	
1	Suzuki Multifunction Gauge	34011-96L45	2	SMG directly plugs in to BCM Harness
4	2' N2K Cable	990C0-88L00-KIT*	1	Part number 990C0-88104, included in N2K Kit
6	N2K Power Cable			Part number 990C0-88112, included in N2K Kit
7	N2K Tee			Part Number 990C0-88110, included in N2K Kit
9	Terminator (F)			Part number 990C0-88113, included in N2K Kit
10	Terminator (M)			Part number 990C0-88114, included in N2K Kit
15	2' Gauge Extension	36667-96L60	(1)	Optional, only use if necessary
18	Paddle Wheel Sensor	990C0-88317	1	Choose Either (Optional, only if speed data is required)
	GPS Module	990C0-88122		
23	BCM Harness #1, Multi-Engine	36623-98L30	-	Included in SPC 2.0 Control Kits
24	Multi-Gauge Adapter**	36667-96L50	1	Same as below, but has connections for tanks 3 and 4
		36667-96L40		
27	Terminal Resistor	33926-98L00	-	Included in SPC 2.0 Control Kits

\*Only required if adding a speed source

No.	Part Name	Part Number	Qty.	
1	Suzuki Multifunction Gauge	34011-96L45	4	SMG directly plugs in to BCM Harness
4	2' N2K Cable	990C0-88L00-KIT*	1	Part number 990C0-88104, included in N2K Kit
6	N2K Power Cable			Part number 990C0-88112, included in N2K Kit
7	N2K Tee			Part Number 990C0-88110, included in N2K Kit
9	Terminator (F)			Part number 990C0-88113, included in N2K Kit
10	Terminator (M)			Part number 990C0-88114, included in N2K Kit
5	15' N2K Cable	990C0-88107	1	Choose required length from station 1 to station 2
	25' N2K Cable	990C0-88108		
15	2' Gauge Extension	36667-96L60	1	Optional, only use if necessary
18	Paddle Wheel Sensor	990C0-88317	1	Choose Either (Optional, only if speed data is required)
	GPS Module	990C0-88122		
20	2nd Station Main Harness	36622-98L00	-	Included in SPC 2.0 Control Kits
21	21' Main Harness	36620-98L00	-	For illustration purposes only
	31' Main Harness	36620-98L10		
23	BCM Harness #1, Multi-Engine	36623-98L30	-	Included in SPC 2.0 Control Kits
24	Multi-Gauge Adapter**	36667-96L50	1	Same as below, but has connections for tanks 3 and 4
		36667-96L40	1	Used to Connect Multiple SMG's
26	BCM Harness #2, Multi-Engine	36624-98L10	-	Included in SPC 2.0 Control Kits

\*Only required if adding a speed source

\*\*Can use 1 x 36667-96L40 + 1 x 36667-96L50, or 2 x 36667-96L40 if tanks 3 and 4 not required

# SUZUKI PRECISION CONTROL 2.0 TRIPLE OR QUAD

## TRIPLE

No.	Part Name	Part Number	Qty.	
1	Suzuki Multifunction Gauge	34011-96L45	3	SMG directly plugs in to BCM Harness
4	2' N2K Cable	990C0-88L00-KIT*	1	Part number 990C0-88104, included in N2K Kit
6	N2K Power Cable			Part number 990C0-88112, included in N2K Kit
7	N2K Tee			Part Number 990C0-88110, included in N2K Kit
9	Terminator (F)			Part number 990C0-88113, included in N2K Kit
10	Terminator (M)			Part number 990C0-88114, included in N2K Kit
15	2' Gauge Extension	36667-96L60	1	Optional, only use if necessary
18	Paddle Wheel Sensor	990C0-88317	1	Choose Either (Optional, only if speed data is required)
	GPS Module	990C0-88122		
23	BCM Harness #1, Multi-Engine	36623-98L30	-	Included in SPC 2.0 Control Kits
24	Multi-Gauge Adapter**	36667-96L50	1	Used to Connect Multiple SMG's
25		36667-96L40	1	Same as above, but has connections for tanks 3 and 4
27	Terminal Resistor	33926-98L00	-	Included in SPC 2.0 Control Kits

\*Only required if adding a speed source \*\*Can use 1 x 36667-96L40 + 1 x 36667-96L50, or 2 x 36667-96L40 if tanks 3 and 4 not required

No.	Part Name	Part Number	Qty.	
1	Suzuki Multifunction Gauge	34011-96L45	6	SMG directly plugs in to BCM Harness
4	2' N2K Cable	990C0-88L00-KIT*	1	Part number 990C0-88104, included in N2K Kit
6	N2K Power Cable			Part number 990C0-88112, included in N2K Kit
7	N2K Tee			Part Number 990C0-88110, included in N2K Kit
9	Terminator (F)			Part number 990C0-88113, included in N2K Kit
10	Terminator (M)			Part number 990C0-88114, included in N2K Kit
5	15' N2K Cable	990C0-88107	1	Choose required length from station 1 to station 2
	25' N2K Cable	990C0-88108		
15	2' Gauge Extension	36667-96L60	1	Optional, only use if necessary
18	Paddle Wheel Sensor	990C0-88317	1	Choose Either (Optional, only if speed data is required)
	GPS Module	990C0-88122		
20	2nd Station Main Harness	36622-98L00	-	Included in SPC 2.0 Control Kits
21	21' Main Harness	36620-98L00	-	For illustration purposes only
	31' Main Harness	36620-98L10		
23	BCM Harness #1, Multi-Engine	36623-98L30	-	Included in SPC 2.0 Control Kits
24	Multi-Gauge Adapter**	36667-96L50	1	Used to Connect Multiple SMG's
25		36667-96L40	3	Same as above, but has connections for tanks 3 and 4
26	BCM Harness #2, Multi-Engine	36624-98L10	-	Included in SPC 2.0 Control Kits

\*Only required if adding a speed source \*\*Can use 3 x 36667-96L40 + 1 x 36667-96L50, or 4 x 36667-96L40 if tanks 3 and 4 not required

## QUAD

No.	Part Name	Part Number	Qty.	
1	Suzuki Multifunction Gauge	34011-96L45	4	SMG directly plugs in to BCM Harness
4	2' N2K Cable	990C0-88L00-KIT*	1	Part number 990C0-88104, included in N2K Kit
6	N2K Power Cable			Part number 990C0-88112, included in N2K Kit
7	N2K Tee			Part Number 990C0-88110, included in N2K Kit
9	Terminator (F)			Part number 990C0-88113, included in N2K Kit
10	Terminator (M)			Part number 990C0-88114, included in N2K Kit
15	2' Gauge Extension	36667-96L60	1	Optional, only use if necessary
18	Paddle Wheel Sensor	990C0-88317	1	Choose Either (Optional, only if speed data is required)
	GPS Module	990C0-88122		
24	Multi-Gauge Adapter**	36667-96L50	1	Used to Connect Multiple SMG's
25		36667-96L40	2	Same as above, but has connections for tanks 3 and 4
27	Terminal Resistor	33926-98L00	-	Included in SPC 2.0 Control Kits
28	BCM Harness #1, Quaruple	36623-98L40	-	Included in SPC 2.0 Control Kits

\*Only required if adding a speed source \*\*Can use 2 x 36667-96L40 + 1 x 36667-96L50, or 3 x 36667-96L40 if tanks 3 and 4 not required

No.	Part Name	Part Number	Qty.	
1	Suzuki Multifunction Gauge	34011-96L45	8	SMG directly plugs in to BCM Harness
4	2' N2K Cable	990C0-88L00-KIT*	1	Part number 990C0-88104, included in N2K Kit
6	N2K Power Cable			Part number 990C0-88112, included in N2K Kit
7	N2K Tee			Part Number 990C0-88110, included in N2K Kit
9	Terminator (F)			Part number 990C0-88113, included in N2K Kit
10	Terminator (M)			Part number 990C0-88114, included in N2K Kit
5	15' N2K Cable	990C0-88107	1	Choose required length from station 1 to station 2
	25' N2K Cable	990C0-88108		
15	2' Gauge Extension	36667-96L60	1	Optional, only use if necessary
18	Paddle Wheel Sensor	990C0-88317	1	Choose Either (Optional, only if speed data is required)
	GPS Module	990C0-88122		
20	2nd Station Main Harness	36622-98L00	-	Included in SPC 2.0 Control Kits
21	21' Main Harness	36620-98L00	-	For illustration purposes only
	31' Main Harness	36620-98L10		
24	Multi-Gauge Adapter**	36667-96L50	1	Used to Connect Multiple SMG's
25		36667-96L40	5	Same as above, but has connections for tanks 3 and 4
26	BCM Harness #2, Quadruple	36624-98L20	-	Included in SPC 2.0 Control Kits
28	BCM Harness #1, Quaruple	36623-98L40	-	Included in SPC 2.0 Control Kits

\*Only required if adding a speed source

\*\*Can use 2 x 36667-96L40 + 1 x 36667-96L50, or 3 x 36667-96L40 if tanks 3 and 4 not required

# SUZUKI C-10 & NMEA 2000 ACCESSORIES PARTS LIST



The Suzuki Color Display is a LED high-resolution screen that has very sharp, crisp lines and is extremely easy to read. It has a bonded glass front screen so whether it be sun, salt, or UV rays, your screen will never blur or fade like a plastic cover. The C-10 has its mounting points in the front so there is no need to crawl under your console to mount it. There is one easy connection to Suzuki's digital harness. Save your favorite programming and update the display using the Mini USB port. The C-10 is able to monitor functions such as RPM, Speed\*, Water Pressure\*, Fuel Level\*, Fuel Consumption, Coolant Temperature, Oil Level, Oil Temperature, Trim Level, Hours, or Volts. The C-10 is able to monitor up to 2 engines simultaneously. The Suzuki C-10 can be retro-fitted, to replace a 4" round gauge. (\* additional sensors required)

## Suzuki Color Display Kit

990C0-04C10-KIT Suzuki Color Display Kit includes:		
Part Number	Description	Qty
990C0-04C10	Suzuki Color Display	1
990C0-88114	Male Terminator	1
990C0-88113	Female Terminator	1
990C0-88110	NMEA "T"	2
990C0-88112	Power Cable + Network T	1
990C0-88149-357	Interface Cable	1

## How It Works

- Bright, full color 320 x 240 LED screen makes it easier to see menus and screen detail in both full sunlight and night operation
- Fits standard 3-3/8" gauge cutout
- Each C-10 gauge will display engine info from 1 or 2 engines
- Preconfigured pages or create your own
- Micro USB for software updates (update cable required)
- Power and data through single NMEA 2000 micro-C connector
- Low profile front mount – 8 mm of dash (rear mount option for "glass dash" installations)

## Suzuki C-10 Cover

This cover protects the Suzuki Color Display (C-10) from the elements. Use the cover to extend the life of your Suzuki C-10 Color Gauges.



990C0-10C10	Suzuki C10 Cover
-------------	------------------

## Suzuki Engine Connect Gateway

990C0-88171	Suzuki Connect Gateway	The Suzuki Engine Connect Gateway provides Suzuki engine information, diagnostic codes and proprietary pop-up messages on compatible Simrad and Lowrance Multi-Function display (MFD) units. Note: Do not utilize C10 gauges with the Suzuki Connect Gateway. Only one Suzuki Connect Gateway is required per vessel. In multiple engine applications, each additional engine will require a standard Suzuki engine interface.
34923-96L13	Gateway Interface	The Suzuki 4 Tank Gateway provides engine information to third party MFD's (Multi-Function Displays) for newer Suzuki Digital Engines with SPC 2.0 and Suzuki Mechanical Engines with the CAN Mechanical Harness (Serial range 54000- and newer mechanical models only). The Gateway has 4 fuel tank connections, that when programmed with a C10, can display up to 4 fuel tank levels on third party MFD's. C10 must have software v23.1 or newer. Do not use in conjunction with SMG's.

## SENSORS



### GPS Antenna with Compass

Suzuki has upgraded its GPS Antenna to include compass heading.

990C0-88122	GPS Antenna with Compass Heading
-------------	----------------------------------

### Fluid Level Sensor

Monitors fluid levels such as fuel, live well water level, etc. 10 ft. cable.

990C0-88217	Fluid Level Sensor
-------------	--------------------

### Speed Sensor

Paddle wheel-type speed sensor. 10 ft. cable.

990C0-88317	Speed Wheel
-------------	-------------

### Temperature Sensor

Surface Water Temperature sensor. 10 ft. cable.

990C0-88318	Temperature Sensor
-------------	--------------------

## INTERFACE CABLES

### Engine Interface Cables



DF9.9B thru DF350A Suzuki Outboards can connect to the system using the exclusive Engine Interface. (Adapter Cable also needed for DF115BG/140BG/150AP/175AP/200AP/250AP/300AP/300B/350A)

990C0-88149-357	Software Version 3.7 (Subject to change) ~310001-Newer
990C0-88149-294	Software Version 2.9 (Subject to change) ~Previous -219999
990C0-05C10-CBL	C10 Update Cable

## NMEA 2000 COMPONENTS

### NMEA 2000 Extension Cables



NMEA 2000 Extension Cable allows compatible sensors or other devices to be added by the use of T-Connectors throughout the system.

990C0-88104	2' Connection cable
990C0-88105	6' Connection cable
990C0-88107	15' Connection cable
990C0-88108	25' Connection cable

### Power Cable

Fused(3A) lead connects extension cable to the power source.

990C0-88112	Single Power Cable (Includes Network T)
-------------	---

### Quad Power Node

Allows network to be powered from multiple power sources (key switch, accessory switch, etc.).

990C0-88130	Quad Power Node
-------------	-----------------

### T-Connector

T-Connector for NMEA 2000 system.

990C0-88110	T-Connector
990C0-88109	Quad-T

### Power Isolation

The NMEA 2000 power isolator makes sure the NMEA 2000 power from the engines and system power are kept separate.

990C0-88115	Network Power Isolator (not shown)
-------------	------------------------------------

### NMEA Adaptor

Used to connect a new style NMEA device net connector to an older network with Blue T's. Used to connect an early Blue Connector device to the later NMEA T.

990C0-88137	NMEA Device to Blue "T"
-------------	-------------------------

### Terminating Resistors

120 ohm Terminating Resistors are required for any open cable ends in the NMEA 2000 system.

990C0-88113	Terminator - Female
990C0-88114	Terminator - Male

# MECHANICAL CONTROLS

## Single Binnacle Control Box

Single Binnacle Control Box uses a convenient thumb-operated power trim and tilt switch, push-button shifting disengagement, for faster warm-ups and built-in neutral safety switch. Main wiring harness, ignition switch, and control cable must be ordered separately, see pages 25, 30, and 31 for options.

67200-88L20	Single Binnacle Control Box Assembly
-------------	--------------------------------------



## Flush Mount Binnacle Control Box

Suzuki's top quality Flush Mount Control Box features include a smooth action thumb-controlled power trim and tilt switch, a convenient push button to disengage transmission for throttle only, and a built-in neutral safety switch. Reversible for left hand installations. Main wiring harness, ignition switch, and control cable must be purchased separately, see pages XXXX for options.

67200-93J34	Flush Mount Control Box
-------------	-------------------------



## Dual Binnacle Control Box

Dual Binnacle Control Box includes the same features as the Single Binnacle Control Box, plus a unique base mounted PTT system allowing you to trim the motors individually then adjust them together for maximum performance. Main wiring harness, ignition switch, and control cable must be ordered separately, see pages 25, 30, and 31 for options.

67200-88L13	Dual Binnacle Control Box Assembly
-------------	------------------------------------



## Side Mount Control Boxes

Side Mount Control Boxes can be tailored to your needs. Standard features include a fast idle lever for easy warm-ups, a key-type ignition switch, and an emergency stop switch. Main Wiring Harness and control cables ordered separately. See page 31 for options.

67200-93J70	DF9.9B-DF250	Single Engine, with PTT switch
-------------	--------------	--------------------------------

# MECHANICAL ENGINE RIGGING



## Dual Engine Ignition and Emergency Stop Switch Panel Assembly

Dual Engine Ignition and Emergency Stop Switch Panel Assembly. Includes wiring, hardware and stop switch lanyard.

37100-98L30 DF9.9B - DF250

## Switch Panel Assemblies

Genuine Suzuki Switch Panel Assemblies are designed to match and connect with other Suzuki components for easy installation and trouble-free operation.



Vertical Ignition Switch

37100-98L10 DF9.9B - DF250



Horizontal Ignition Switch

37100-98L20 DF9.9B - DF250

## Single Engine Ignition and Emergency Stop Switch Panel Assembly

Single Engine Ignition and Emergency Stop Switch Panel Assembly. Includes wiring, hardware and stop switch lanyard.



## Emergency Stop Switch Panel Assembly

Emergency Stop Switch Panel Assembly. Includes wiring, hardware and lanyard.

37803-98L00 DF9.9B - DF250



## P.T.T. Switch Panel Assembly

P.T.T. Switch Panel Assembly. Includes wiring and hardware.

37805-88L00 DF40A - DF250



## Trolling Mode Control Switch

Allows the use of the Suzuki Troll Mode on equipped engines. When Troll Mode is engaged, this switch allows for adjustments of engine RPM in 50 RPM increments, from idle to 1200 RPM to make setting and maintaining a trolling speed easy. Consult owner's manual or Suzuki Outboard Dealer for additional details on Suzuki Troll System operation.

37860-98L00 DF40A/50A/50AV/60A/60AV/75A/90A/115A/115SS/140A/150A/150A/175A/200A/150AP-300AP/300B-350A



## Single Engine Ignition Switch Panel Assembly

Single Engine Ignition Switch Panel Assembly. Includes wiring and hardware.

37100-98L00 DF9.9B - DF250

## Aux Power Trim Switch (not shown)

Allows quick connection of remote trim switch with easy plug-in bullet connectors.

36647-93J00



## Battery Isolator Lead Set

Used for charging auxiliary battery.

33830-96J00	DF150/175 (S/N Models up to 499999)
33830-98J11	DF150/175 (S/N Models 510001 and newer) DF200AP/175AP/150AP/250A/300AP/300B
33830-98J02	DF300 (S/N Models up to 199999)



## Main Wiring Harnesses

Analog / K-Line Main Wiring Harnesses. Order length as needed for rigging applications.

36620-89L10	DF9.9B/15A/20A	21'
36620-94L20	DF25A/DF30A	21'
36620-93J80	DF40A-DF250	16'
36620-93J70	DF40A-DF250	21'
36620-93J90	DF40A-DF250	26'
36620-93J12	DF9.9B-DF250	6.5' Extension
36620-93J42	DF9.9B-DF250	10' Extension



## Thru-Hull Fitting And Hose Kits

Thru-Hull Fitting and Hose Kit can handle single, dual and triple motor installations. One Thru Hull Kit and one Adaptor Kit is necessary for each outboard used.

990C0-20010	Includes:	Black Thru Hull Kit • 1 - 4' Black Hose • 1 - Fuel Hose Port • 1 - 2" Thru-Hull Fitting • 2 - Stainless Steel Bolts & Nuts
990C0-20020	Includes:	White Thru Hull Kit • 1 - 4' White Hose • 1 - Fuel Hose Port • 1 - 2" Thru-Hull Fitting • 2 - Stainless Steel Bolts & Nuts

## CAN Bus Main Wiring Harnesses

The mechanical CAN Bus main harness gives mechanically controlled Suzuki outboard engines the same access to the Autotrim and Keyless Starting features previously only available to digital Suzuki outboard engines. See chart below for engine compatibilities.

Feature Compatibilities	Engine Model				
	DF40A-60A	DF75A-90A	DF115B-140B	DF150A-200A	DF200-250
CAN Harness	Yes	Yes	Yes	Yes	No
Auto-Trim*	No	No	Yes	Yes	No
Keyless Starting	No	Yes	Yes	Yes	No
SMG4 Adapter**	No	No	No	No	Yes
36620-93JA0	21.3' / 6.5m Main Harness				
36620-93JB0	16.4' / 5.0m Main Harness				
36620-93JC0	26.2' / 8.0m Main Harness				
36620-93JD0	6.5' / 2.0m Extension Harness				
36620-93JE0	9.8' / 3.0m Extension Harness				

\*Must use SMG4 for Auto-Trim feature \*\*SMG4 Adapter cable 36661-96L30 not required when CAN main harness is used

## Adapter Kits

Kit Includes:  
1 - Through-Hull attachment  
2 - pins,  
2 - e-rings



67300-98J10	DF115A/140A/150/175/200A/200AP/DF250AP/300AP/300B/350A 2016-Newer
67300-93J01	DF150/175/200/225/250/300 2006-2015
67300-90J00	DF75A/90A/115/140 2006-2015

## Replacement Ignition Keys (not shown)

37141-99E00	Key 931	37141-99E60	Key 937
37141-99E10	Key 932	37141-99E70	Key 938
37141-99E20	Key 933	37141-99E80	Key 939
37141-99E30	Key 934	37141-99E90	Key 940
37141-99E40	Key 935	37141-99EA0	key 941
37141-99E50	Key 936	37141-99EB0	Key 942

## Suzuki Performance Remote Control Cables

Suzuki Performance Cables have a unique design that incorporates a patent-pending splined core. Ridges on the core allow a close fit to the cable's inner liner with minimum contact, allowing the core to glide back and forth smoothly. All cables are factory tested and approved for heavy use applications. Order cable length as needed.

990C0-11002-008	8'	990C0-11002-014	14'	990C0-11002-020	20'	990C0-11002-026	26'
990C0-11002-009	9'	990C0-11002-015	15'	990C0-11002-021	21'	990C0-11002-027	27'
990C0-11002-010	10'	990C0-11002-016	16'	990C0-11002-022	22'	990C0-11002-028	28'
990C0-11002-011	11'	990C0-11002-017	17'	990C0-11002-023	23'	990C0-11002-029	29'
990C0-11002-012	12'	990C0-11002-018	18'	990C0-11002-024	24'	990C0-11002-030	30'
990C0-11002-013	13'	990C0-11002-019	19'	990C0-11002-025	25'		

## Miscellaneous Accessories

Replace this copy

38500-92X50	Warning Buzzer.
36620-93J20	Control Box Adaptor Harness. Adapts 2005+ model control box with square connector to 2004 and earlier motors with round connector.
36620-93J30	Control Box Adaptor Harness. Adapts 2005+ model engine with square connector to 2004 and earlier harness with round connector.
67500-88L00	Single Binnacle Control Box Spacer
67500-88L10	Dual Binnacle Control Box Spacer

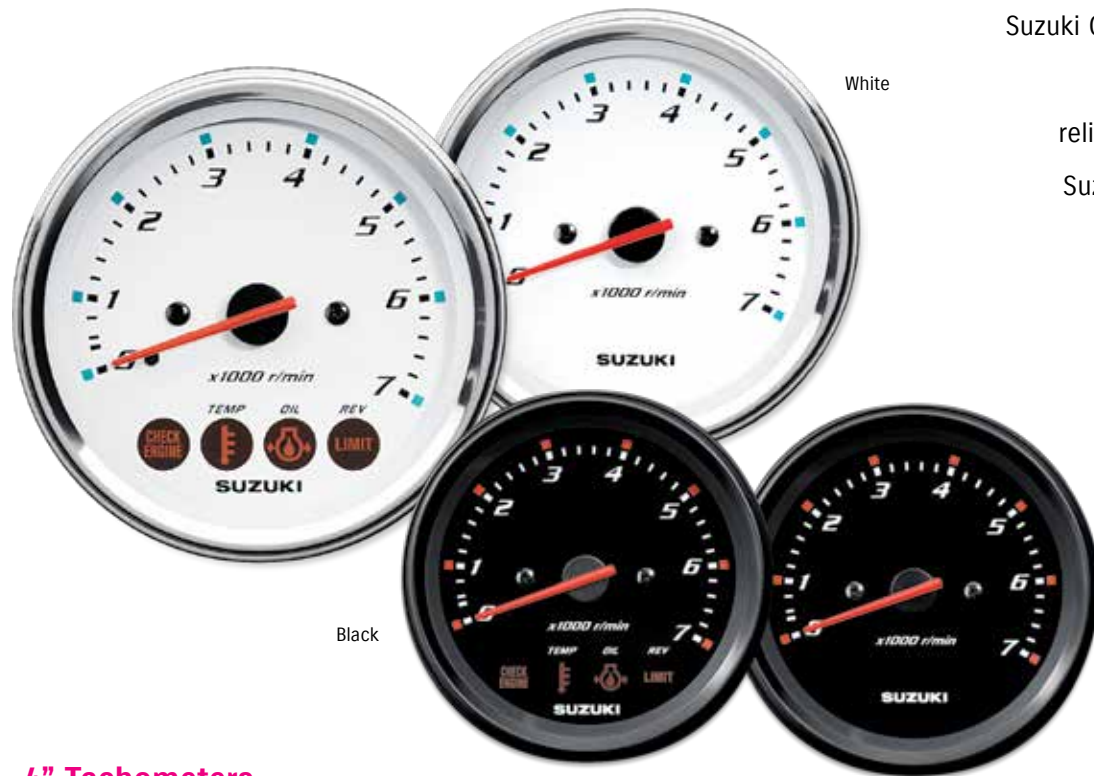


## Replacement Lanyard

Replacement Lanyard for Emergency Stop Switch.

37823-92E02

# SUZUKI ANALOG INSTRUMENTS



## 4" Tachometers

7,000 max RPM Tachs are available with or without 4-Stroke monitor functions. Monitor functions include: Low Oil Pressure Warning, Engine Temperature Warning, Check Engine Warning and Over-Rev Limit Warning.

<b>34200-93J14</b>	White - With monitor functions
<b>34200-93J34</b>	White - Without monitor functions
<b>34200-93J02</b>	Black - With monitor functions
<b>34200-93J22</b>	Black - Without monitor functions

## Trolling Mode Control Switch

Allows the use of the Suzuki Trolling Mode on equipped engines. When Trolling Mode is engaged, this switch allows for adjustments of engine RPM in 50 RPM increments, from idle to 1,200 RPM to make setting and maintaining a trolling speed easy. Consult owner's manual or Suzuki Outboard Dealer for additional details on Suzuki Trolling System operation.



<b>37860-98L00</b>
DF40A/50A/50AV/60A/60AV/75A/90A/115A/115SS/140A/150A/150A/175A/200A

Suzuki Genuine Instruments are custom-designed to provide the quality, reliability and value you expect from Suzuki Products. The wide selection allows you to accurately monitor a variety of essential functions. All instruments are lighted for night-time boating and feature standard 2" and 4" diameters for easy installation.

## 4" Tachometer With Suzuki Trolling Mode Scale

Easy to read 4" Tachometer has a scale from 0-7,000 RPM for standard use and a secondary scale from 0-3,000 RPM with markers at 50 RPM intervals for use with the Suzuki Trolling Mode System. Gauge also includes warning lamps for Engine Temperature, Low Oil, Check Engine, and Over-Rev. When in Trolling Mode, Over-Rev Lamp stays on to indicate that Trolling Mode has been engaged. The secondary RPM scale is designed to make setting and maintaining a lower troll speed simple. Fits DF40 A/50A/50AV/60A/60AV/75A/90A/115A/140A (DF300/350A requires C-10 gauges) \*See engine owner's manual for information about Suzuki Trolling Mode System. Not all models come equipped with trolling mode system. Accessory Trolling Mode Switch is required for Suzuki Trolling Mode System use. Suzuki recommends the use of this gauge for trolling use.

<b>34200-93J54</b>	White - DF40A/50A/50AV/60A/60AV/75A/90A/115SS/115BG/140BG/140A/150SS/150A/175A/200A/200SS (DF150AP/175AP/200AP/250AP/300/300B/350A requires digital instrumentation)
<b>34200-93J43</b>	Black - DF40A/50A/50AV/60A/60AV/75A/90A/115SS/115BG/140BG/140A/150SS/150A/175A/200A/200SS (DF150AP/175AP/200AP/250AP/300/300B/350A requires digital instrumentation)



## 4" Speedometers

Bourdon-tube type speedometer with readings in M.P.H. and Km/h. Includes vinyl tube, plus all installation instructions and hardware. \*Pitot tube 34190-87D00 must be ordered separately.

<b>34100-93J13</b>	White - 80 mph
<b>34100-93J33</b>	White - 50 mph
<b>34100-93J02</b>	Black - 80 mph
<b>34100-93J22</b>	Black - 50 mph
<b>34190-87D00*</b>	Pitot Tube



## 2" Hour Meter

12 volt electric motor driven meter indicates the number of hours your outboard motor has been operated to indicate when periodic services are necessary.

<b>34500-93J13</b>	White
<b>34500-93J02</b>	Black

## 2" Trim Gauge

Magnetic type gauge shows trim angle for optimum performance and efficiency.

<b>34800-93J13</b>	White
<b>34800-93J02</b>	Black

## 2" Voltmeter

A well charged battery is essential for quick and easy starts. Monitor the charging system using a Voltmeter.

<b>34600-93J13</b>	White
<b>34600-93J02</b>	Black



## 2" Fuel Gauge

Operates on 12 volts with magnetically damped needle. Works with most fuel tank sending units.

<b>34300-93J14</b>	White
<b>34300-93J02</b>	Black

## 2" Water Pressure Gauge 15 psi

Bourdon-tube type gauge measures cooling water pressure. Instructions and dash installation hardware included. Order Installation Kit for appropriate model.

<b>34650-93J33</b>	White
<b>34650-93J22</b>	Black

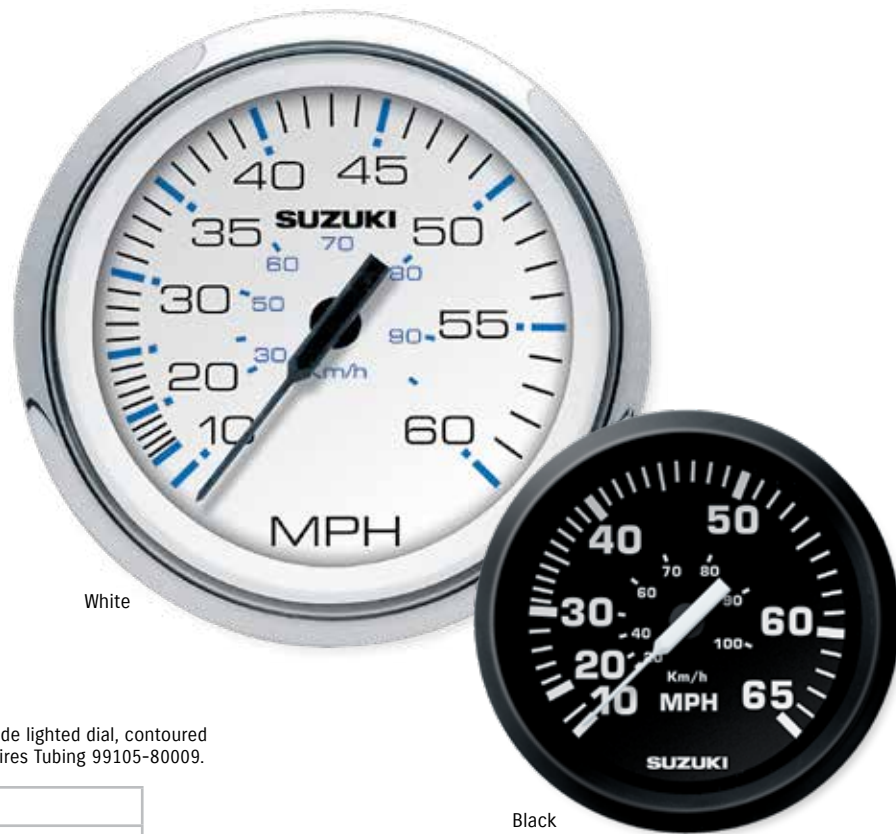
## Water Pressure Gauge Installation Kits

Kit includes fittings and hoses needed for motor to gauge connection.

<b>34660-93J02</b>	DF225/250/250AP/300AP
<b>34660-96J01</b>	DF150/150AP/150A/DF175/175AP/175A/200A
<b>34660-99E01</b>	DF60/70
<b>34660-87J01</b>	DF40/50
<b>34660-90J04</b>	DF40A/50A/50AV/60A/60AV/75A/90/DF90A/115/115A/140/140A

# SUZUKI ANALOG INSTRUMENTS

Economically priced, high-quality instruments feature easy plug-in wiring connections, perimeter-lighted dial, chrome bezels, contoured pointers and fog-resistant glass lenses. All use standard 2" or 4" diameters for easy dash installation.



White

Black

## 4" Speedometer

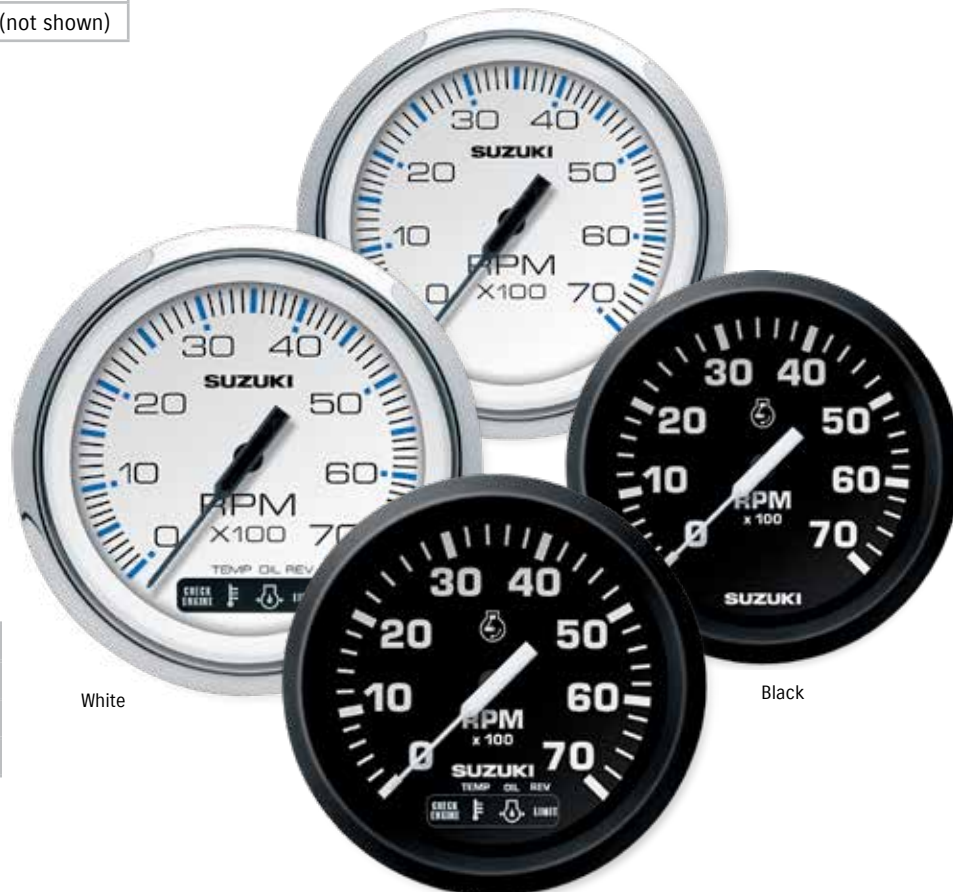
Easy to read 4" Speedometer features include lighted dial, contoured pointer and fog-resistant glass lens. \*Requires Tubing 99105-80009.

990C0-80102	White 60 mph
990C0-80009*	Speedometer Tubing (not shown)
990C0-80002	Black 65 mph
990C0-80009*	Speedometer Tubing (not shown)

## 4" Tachometers

7,000 max R.P.M. Tachs are available with or without 4-Stroke monitor functions. Monitor functions include: Low Oil Pressure Warning, Engine Temperature Warning, Check Engine Warning and Over-Rev Limit Warning.

990C0-80101	White - With monitor functions
990C0-80100	White - Without monitor functions
990C0-80001	Black - With monitor functions
990C0-80000	Black - Without monitor functions



White

Black



White

Black

## 2" Engine Monitor Gauge

Engine Monitor Gauge for 4-stroke engines helps alert you to low oil pressure, high engine temperature and engine over-rev

990C0-80108	White
990C0-80008	Black



White

Black

## 2" Trim Gauge

To help maintain steering stability and good performance, proper trim angle is essential. The Trim Gauge helps you monitor the trim angle. For use with 2-wire senders.

990C0-80105	White
990C0-80005	Black



White

Black

## 2" Digital Hour Meter

Handy Hour Meter helps you keep track of the time between services and total running time.

990C0-80110	White
990C0-80010	Black



White

Black

## 2" Fuel Gauge

Adding a Fuel Gauge can help you monitor fuel level. Connects easily using your boat's fuel sending unit harness.

990C0-80103	White
990C0-80003	Black



White

Black

## 2" Voltmeter

A well charged battery is essential for quick and easy starts. Monitor the charging system by using a Voltmeter.

990C0-80106	White
990C0-80006	Black



White

Black

## 2" Water Pressure Gauge 30 psi

Bourdon-tube type gauge measures cooling water pressure. Instructions and dash installation hardware included. Order Installation Kit for appropriate model.

990C0-80104	White
990C0-80004	Black

## Water Pressure Gauge Installation Kits

Kit includes fittings and hoses needed for motor to gauge connection.

34660-93J02	DF225/250/250AP/300AP
34660-87J01	DF40/50
34660-96J01	DF150/150AP/150A/DF175/175AP/175A/200AP
34660-99E01	DF60/70
34660-90J04	DF40A/50A/50AV/60A/60AV/75A/90A/90/115/115A/140/140A



# STEERING



## Tiller Handle Kits

New multi-function tiller handle with digital tachometer display. Includes a redesigned and more ergonomic shift lever.

PEARL NEBULAR BLACK	
63002-88L2A-YAY	DF40A/50A
63002-88L18-YAY	DF50AV/60A/60AV
63002-87L18-YAY	DF70A/90A 2021- Prior
63002-87L20-YAY	DF75A/90A ('22 - Current)
63002-90J38-YAY	DF115A
63002-99L00-YAY	DF115B



Digital Tachometer



Shift Lever



Angle Adjustable Bracket



## Tiller Handle Kits

Tiller Handle Kits are designed for easy installation for selected electric start models. Kit includes ignition switch, engine stop switches, wiring harness, cables and grommets.

63002-87J42-0EP	DF40/50	2005 - 2009
63002-88L33-0EP	DF40A/50A/60A	2010 - Current
63002-87L09-0EP	DF75A/90A	2009 - Current
63002-90J43-0EP	DF90/115 w/ Hydraulic Tensioner	2005 - 2015



## Dual Cable Steering Kit

Kit allows you to attach two steering cables for added reliability.

990C0-10004	DF150 - DF250
-------------	---------------



## Drag Link Kits

Corrosion-resistant stainless steel Drag Links are specially designed for use with Suzuki Outboard Motors.

67701-99J02	DF9.9B-DF20A	'10 - Current
67701-93E12	DF9.9/15	'97 - '10
67701-94L00	DF25A/30A	
67701-87J11	DF40/50	'99 - '10
	DF40A-60A/200-250	'10 - Current
	DF60/70	'98 - '10
67701-87L01	DF75A/90A	'09 - Current
67701-90J01	DF90/115/140A	'01 - Current
67701-96J00	DF150-175/200A/AP	'06 - Current
67700-93J00	DF225/250	'04 - Current



## Twin Engine Adapter Plate Set

Adapter plates are used when installing a tie bar on a D115A/140A.

99105-10005	DF115A/140A
	*Does NOT fit DF90A



## Dual Engine Tie Bar

Stainless steel Tie Bar for dual engine steering, adjustable up to 36".

990C0-10006	DF40A - DF140A
67600-93J00	DF150/175/200AP
67600-99L00	DF115BG/140BG



### Compact Water Separator/Fuel Filter

Compact size Water Separator/Fuel Filter is ideal for smaller boat-motor combinations of up to 140 H.P. Not for 150 and above.

99105-20006	Replacement Filter
99105-20006-ASY	Complete Assembly
99105-20006-BWL	Bowl and Drain Valve Assembly

**New Suzuki Fuel Water Separators for Fresh and Salt Water environments coming Summer 2026!**



### Water Separator/Fuel Filter

State-of-the-art filter removes water and other contaminants from the fuel before they reach your engine. It features a transparent removable bowl for easy viewing of fuel condition and a drain valve for water and other impurities. Due to the high flow rate capabilities of this filter system, a special large diameter thread is used. Use only Genuine Suzuki Replacement Filter 99105-20005. Applicable to all models, recommended 150 and up.

99105-20005	Replacement Filter
99105-20005-ASY	Complete Assembly
99105-20004-BWL	Bowl and Drain Valve Assembly

### Plastic Fuel Tanks\*

Constructed of tough, lightweight, high-density polyethylene and made to CARB / EPA standards.

65000-99J01	3 Gallon Tank without Fuel Level Gauge, 11mm connector
65000-95J01	6.6 Gallon Tank with Fuel Level Gauge, 13mm connector

\* Not for use with DF 4/6 without fuel hose with pressure regulator. See dealer for details.



### Bowl Wrench

99105-20003	Bowl Wrench
-------------	-------------



### FUEL CONNECTORS - MOTOR SIDE

Male connectors are located on the motor side, for fuel hose attachment.



65720-985L1	OD:11mm Plated Brass	DT3.5 - 65
-------------	-------------------------	------------



65720-955L1	OD:13mm Plated Brass	DT75 - 140A
-------------	-------------------------	-------------



65720-94403	OD:13mm Plastic	DT4 - 65
-------------	--------------------	----------

### FUEL TANK CONNECTORS

Fuel tank connectors are available in stainless steel with metric thread and plated brass with 1/4" NPT.



65740-95501	OD:13mm Metric	All Models
-------------	----------------	------------



99105-00192	OD:11mm 1/4" NPT	U.S. Tanks
-------------	------------------	------------



99105-00193	OD:13mm 1/4" NPT	U.S. Tanks
-------------	------------------	------------

### FUEL HOSE CONNECTORS

Quick connect and disconnect female fittings fit either hose end.



65750-98506	ID:11mm	Metal for small diameter hoses
-------------	---------	--------------------------------



65750-95501	ID:13mm	Metal for small diameter hoses
-------------	---------	--------------------------------



65750-87J11	Plastic	DF4 - 140A
-------------	---------	------------

### Internal Engine Fuel Filters

Engine Model	Year	Part Number
DF4/6	2002-2016	15410-98500
DF4A/6A	2017-Current	44330-13H00
DF9.9A	2010-Current	44330-13H00
DF9.9/15	2011-2013	15410-98500
DF9.9B/15A/20A	2013-Current	15410-87L00
DF25 V-Twin	2006-2010	15410-87J30
DF25/30	2001-2010	15410-87J10
DF25A/30A	2015-Current	15410-87L00
DF40/50	Late 2006-2010	15410-87J30
DF40A/50A/60A	2010-Current	15410-88L00
DF50AV/60AV	2014-Current	15410-88L00
DF60/70	2007-2009	15410-87J30
DF70A/75A/80A/90A	2009-Current	15410-87L00
DF115/140	2010-2012	15410-87J30
DF115B/140B Including G models	2020-Current	15410-87J30
DF115A/140A/115SS	2013-Current	15412-92J00
DF150/175/150SS	2006-Current	15410-96J00
DF150A/175A/200A	2016-Current	15412-92J00
DF200/225/250 V6	2011-Current	15412-93J10
DF250A/300A/300AP/250SS	2011-Current	15412-93J10
DF300B/300BMD/350A/350AMD	2017-Current	15412-93J10



65750-94404	ID:13mm Plastic	DT4 - 140A
-------------	-----------------	------------



65720-986L0	Plastic	DF4 - 140A
-------------	---------	------------

# PROPELLERS

## DF4/6 (Optional '03-'10)

Material	Blades	Diameter	Pitch	Part Number	DF4	DF6
Aluminum	3	7-1/2	6	<b>58110-91JL0-019</b>	'04-Current	'04-Current
Aluminum	3	7-1/2	6-1/2	<b>58110-91JM0-019</b>	'04-Current	'04-Current
Aluminum	3	7-1/2	7	<b>58110-91JN0-019</b>	'04-Current	'04-Current
Aluminum	3	7-1/2	6	<b>58111-98602-019</b>	'03	
Aluminum	3	7-1/2	6-1/2	<b>58111-98641-019</b>	'03	
Aluminum	3	7-1/2	7	<b>58111-98651-019</b>	'03	

Diameter and pitch are measured in inches. ■=Optional. Refer to the Bushing Application Chart.

## DF9.9/15/20

Material	Blades	Diameter	Pitch	Part Number	DF9.9	DF15/20
Aluminum	3	9-1/4	7	<b>58100-89L00-019</b>	■	■
Aluminum	3	9-1/4	8	<b>58100-90L41-019</b>	■	■
Aluminum	3	9-1/4	9	<b>58100-90L50-019</b>	■	■
Aluminum	3	9-1/4	10	<b>58100-90L60-019</b>	■	■
Aluminum	3	9-1/4	11	<b>58100-89L70-019</b>	■	■
Aluminum	3	9-1/4	12	<b>58100-89L50-019</b>	■	■
Aluminum	3	9-1/4	10	<b>58100-90L60-019</b>	■	■
Aluminum	4	10	5	<b>58100-94JA2-019</b>	■	

Diameter and pitch are measured in inches. ■=Optional.

## DF9.9B/15A/20A

Material	Blades	Diameter	Pitch	Part Number	DF15A/20A
Aluminum	3	9-1/4	8	<b>58100-90L41-019</b>	■
Aluminum	3	9-1/4	9	<b>58100-90L50-019</b>	■
Aluminum	3	9-1/4	10	<b>58100-90L60-019</b>	■
Aluminum	3	9-1/4	11	<b>58100-89L70-019</b>	■
Aluminum	3	9-1/4	12	<b>58100-89L50-019</b>	■

Diameter and pitch are measured in inches. ■=Optional.

## Propeller Bushing Application

Applications	Bushing Type	Bushing	Stopper	Spacer	Washer	Nut
DF4 '03 Models	Push-In	<b>58120-98600</b>				<b>58130-91JL0</b>
DF4 '04 - Current Models	Press-In	<b>58120-91JL0</b>	<b>57635-91JL0</b>	<b>58130-91JL0</b>	<b>58100-90L41-019</b>	<b>58100-90L41-019</b>
DF6 '03 - Current Models	Press-In	<b>58120-91JL0</b>	<b>57635-91JL0</b>			<b>58130-91JL0</b>
DF9.9/9.9A/9.9B/15/15A/20A	Press-In	<b>58120-89L00</b>	<b>57632-94J00</b>	<b>57633-93901</b>	<b>09160-12066</b>	<b>09141-12005</b>
DF25/30 '00 - Current Models	Press-In	<b>58120-96401</b>	<b>57632-96400</b>	<b>57633-96300</b>	<b>09160-14028</b>	<b>09141-14008</b>
DF25 V-Twin	Press-In	<b>58120-96401</b>	<b>57632-95J00</b>	<b>57633-96300</b>	<b>09160-14028</b>	<b>09141-14008</b>
DF40/50	Press-In	<b>58120-88L01</b>	<b>57632-95320</b>	<b>57633-94301</b>	<b>09160-18028</b>	<b>09141-18005</b>
DF40A/50A/60A '10 - Current Models	Press-In	<b>58120-88L01</b>	<b>57632-95320</b>	<b>57633-94301</b>	<b>09160-18028</b>	<b>09141-18005</b>
DF60/70	Press-In	<b>58120-95500</b>	<b>57635-95510</b>	<b>57633-95501</b>	<b>09160-18028</b>	<b>09141-18005</b>
DF60/70	Press-In	<b>58120-94520</b>	<b>57635-94511</b>	<b>57633-94500</b>	<b>09160-18028</b>	<b>09141-18005</b>
DF75A/90A '09 - Current Models	Press-In	<b>58120-90J00</b>	<b>57632-87L01</b>	<b>57633-90J02</b>	<b>09160-18028</b>	<b>09141-18005</b>
DF90/115/140A	Press-In	<b>58120-90J00</b>	<b>57635-90J01*</b>	year specific	<b>09160-18028</b>	<b>09141-18005</b>
DF90/115/140A	Press-In	<b>58120-90J00</b>	<b>57635-90J01*</b>	year specific	<b>09160-18028</b>	<b>09141-18005</b>
DF90/115/140A '01 - '02 Models	Press-In	<b>58120-90J00</b>	<b>57635-90J01*</b>	<b>57633-90J02</b>	<b>09160-18028</b>	<b>09141-18005</b>
DF90/115/140A '03 - '08 Models	Press-In	<b>58120-90J00</b>	<b>57635-90J01*</b>	<b>57633-90J02</b>	<b>09160-18028</b>	<b>09141-18005</b>
DF115/140A Counter Rotation Models	Press-In	<b>58120-90J00</b>	<b>57635-92J01*</b>	year specific	<b>09160-18028</b>	<b>09141-18005</b>
DF150/175/200/200A/225/250/250AP/300/300AP	Press-In	<b>58105-93J00</b>	<b>57632-93J11</b>	<b>57633-87D30</b>	<b>09160-18028</b>	<b>09141-18005</b>
DF250SS	Press-In	<b>58105-93J10</b>	<b>57632-93J21</b>	<b>57633-87D30</b>	<b>09160-18028</b>	<b>09141-18005</b>

\*Uses Spacer For Stopper, 57632-90J00

## Watergrip Bushing Application

Engine Model	Stopper	Propeller Bushing	Kit	INCLUDED IN KIT				
				Spacer	Washer	Stopper	Nut	Cotter Pin
DF2.5	-	-	-	-	-	-	<b>58130-91JL0</b>	<b>09204-03003</b>
DF4A/6A	<b>57635-97L00</b>	<b>58120-91JL0</b>	N/A	-	-	-	<b>58130-91JL0</b>	<b>09204-03003</b>
DF8A/9.9A	<b>57632-94J00</b>	<b>58120-89L00</b>	<b>57630-99J00</b>	-	<b>09160-12066</b>	-	<b>09141-12005</b>	<b>09204-02004</b>
DF9.9/9.9B/15A/15C/20A	<b>57632-94J00</b>	<b>58120-89L00</b>	<b>57630-93901</b>	-	<b>09160-12066</b>	-	<b>09141-12005</b>	<b>09204-02004</b>
DF25A/30A	<b>57632-91L00</b>	<b>58120-96401</b>	<b>57630-96300</b>	<b>57633-96300</b>	<b>09160-14028</b>	-	<b>09141-14008</b>	<b>09204-03003</b>
DF40A/50A/60A	<b>57632-95320</b>	<b>58120-88L01</b>	<b>57630-94301</b>	<b>57633-94301</b>	<b>09160-18028</b>	-	<b>09141-18005</b>	<b>09204-03003</b>
DF50AV/60AV	<b>57635-90J01</b>	<b>58105-90J00</b>	<b>57630-90J10</b>	<b>57633-90J02</b>	<b>09160-18028</b>	-	<b>09141-18005</b>	<b>09204-03003</b>
DF75A/90A	<b>57632-87L01</b>	<b>58105-90J00</b>	<b>57630-90J10</b>	<b>57633-90J02</b>	<b>09160-18028</b>	-	<b>09141-18005</b>	<b>09204-03003</b>
DF115A/115BG/140A/140BG	<b>57635-92J01</b>	<b>58105-90J00</b>	<b>57630-90J10</b>	<b>57633-90J02</b>	<b>09160-18028</b>	-	<b>09141-18005</b>	<b>09204-03003</b>
DF150-DF300 Non-Watergrip	<b>57632-93L01</b>	-	<b>57630-92E00</b>	<b>57633-87D30</b>	<b>09160-18019</b>	-	<b>09141-18005</b>	<b>09204-03003</b>
DF150A-DF300AP Watergrip	<b>57632-93L11</b>	<b>58120-93L00</b>	<b>57630-93L00</b>	<b>57633-93L00</b>	<b>09160-18028</b>	-	<b>09141-18005</b>	<b>09204-03003</b>
DF300B/350A Front	<b>58531-98L00</b>	<b>58520-98L00</b>	<b>58540-98L10</b>	<b>58541-98L00</b>	-	<b>58551-98L00</b>	<b>58561-98L01</b>	-
DF300B/350A Rear	<b>58631-98L00</b>	<b>58520-98L00</b>	<b>58640-98L10</b>	<b>58641-98L00</b>	<b>09160-18019</b>	-	<b>09141-18005</b>	<b>09204-03003</b>

## Propeller Hardware Kits

Includes the spacer, cotter key, washer and nut to secure the propeller to the shaft.



<b>57630-99J00</b>	DF8A/9.9A
<b>57630-93900</b>	DF9.9B/15A/20A
<b>57630-96300</b>	DF25A/30A
<b>57630-94301</b>	DF40A/50A/60A
<b>57630-90J00</b>	DF50AV/60AV
	DF75/90A
	DF115A/115B/115BG
	DF140A/140B/140BG
<b>57630-93L00</b>	DF150A-DF300AP (Watergrip)
<b>57630-92E00</b>	DF150-DF300AP (Non-Watergrip)
<b>58540-98L00</b>	DF300B/DF350A Front
<b>58640-98L00</b>	DF300B/DF350A Rear

## DF25A/30A

Material	Blades	Diameter	Pitch	Part Number	DF25A/30A
Aluminum	3	10-1/4	9	<b>58100-96372-019</b>	■
Aluminum	3	10-1/4	10	<b>58100-91L40-019</b>	■
Aluminum	3	10-1/4	10	<b>58100-96472-019*</b>	■
Aluminum	3	10-1/4	11	<b>58100-91L50-019</b>	■
Aluminum	3	10-1/4	12	<b>58100-96482-019</b>	■
Aluminum	3	10-1/4	13	<b>58100-96492-019</b>	■
Aluminum	3	10-1/4	14	<b>58100-95D01-019</b>	■
Aluminum	3	10-1/4	15	<b>58100-96462-019</b>	■

Diameter and pitch are measured in inches. ■=Optional.

\*Thicker Blade

## DF60/70

Material	Blades	Diameter	Pitch	Part Number	'98-'09
Aluminum	3	14	11	<b>58100-99E10-019</b>	■
Aluminum	3	13-3/4	13	<b>58100-99E00-019</b>	■
Aluminum	3	13-1/2	15	<b>58100-94500-019</b>	■
Aluminum	3	13-1/4	17	<b>58100-94512-019</b>	■
Aluminum	3	13	19	<b>58100-94522-019</b>	■
Aluminum	3	13	21	<b>58100-94532-019</b>	■

Diameter and pitch are measured in inches. Extremely durable stainless steel propellers especially designed for high performance boats. ■=Optional. Type V Cupped aluminum propeller with press-in bushing.

## DF40A/50A/60A

Material	Blades	Diameter	Pitch	Part Number	'99 - Current
Aluminum	3	11-1/2	9	<b>58100-88LC0-019</b>	■
Aluminum	3	11-1/2	10	<b>58100-88LD0-019</b>	■
Aluminum	3	11-1/2	11	<b>58100-88LE0-019</b>	■
Aluminum	3	11-5/8	12	<b>58100-88LA0-019</b>	■
Aluminum	3	11-1/2	13	<b>58100-88LB0-019</b>	■
Aluminum	3	11-3/8	14	<b>58100-88LQ0-019</b>	■
Aluminum	3	11-1/4	15	<b>58100-88LR0-019</b>	■
Aluminum	3	11-1/8	16	<b>58100-88LS0-019</b>	■
Aluminum	3	11	17	<b>58100-88LF0-019</b>	■
Stainless Steel	3	11-3/4	10	<b>990C0-00600-10P</b>	■
Stainless Steel	3	11-3/4	11	<b>990C0-00600-11P</b>	■
Stainless Steel	3	11-3/4	12	<b>990C0-00600-12P</b>	■
Stainless Steel	3	11-3/4	13	<b>990C0-00600-13P</b>	■
Stainless Steel	3	11-3/4	14	<b>990C0-00600-14P</b>	■
Stainless Steel	3	11-3/4	15	<b>990C0-00600-15P</b>	■
Stainless Steel	3	11-3/4	16	<b>990C0-00600-16P</b>	■
Stainless Steel	3	11-3/4	17	<b>990C0-00600-17P</b>	■

Diameter and pitch are measured in inches. ■=Optional.

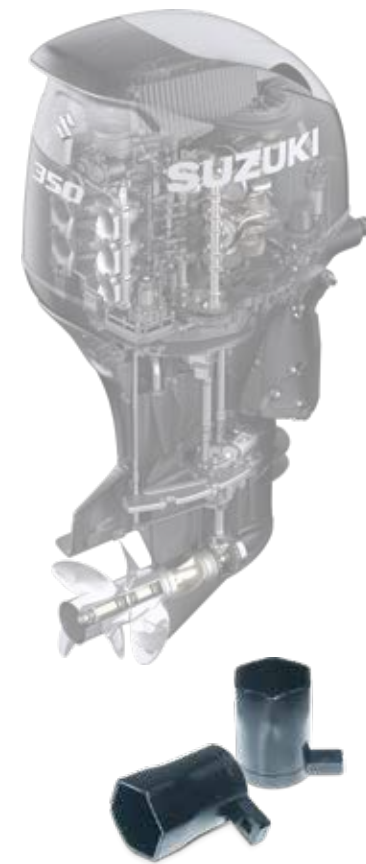
## DF50AV/60AV/75A/90A/115/115A/115BG/140/140A/140BG

Material	Blades	Diameter	Pitch	Part Number	'99 - Current
Aluminum	3	14	9	<b>990C0-00750-09P</b>	■
Aluminum	3	14	11	<b>990C0-00750-11P</b>	■
Aluminum	3	14	13	<b>990C0-00750-13P</b>	■
Aluminum	3	13-7/8	15	<b>990C0-00750-15P</b>	■
Aluminum	3	13-3/4	17	<b>990C0-00750-17P</b>	■
Aluminum	3	13-3/4	19	<b>990C0-00750-19P</b>	■
Aluminum	3	13-3/4	21	<b>990C0-00750-21P</b>	■
Aluminum	3	13-3/4	23	<b>58100-87LF1-019</b>	■
Aluminum	3	13-1/2	15	<b>990C0-00760-15P</b>	■
Aluminum	3	14	17	<b>990C0-00760-17P</b>	■
Aluminum	3	14	19	<b>990C0-00760-19P</b>	■
Aluminum	3	14	21	<b>990C0-00760-21P</b>	■
Aluminum	3	14	23	<b>990C0-00760-23P</b>	■
Stainless Steel	3	14	15	<b>990C0-00610-15P</b>	■
Stainless Steel	3	14	16	<b>990C0-00610-16P</b>	■
Stainless Steel	3	14	17	<b>990C0-00610-17P</b>	■
Stainless Steel	3	14	18	<b>990C0-00610-18P</b>	■
Stainless Steel	3	14	19	<b>990C0-00610-19P</b>	■
Stainless Steel	3	14	20	<b>990C0-00610-20P</b>	■
Stainless Steel	3	14	21	<b>990C0-00610-21P</b>	■

# DF300B/350A PROPELLERS AND TOOLS

## DF300B/DF350A Propellers

Material	Blades	Diameter	Pitch	Part Number		
Stainless Steel	3	15-1/2"	12	<a href="#">990C0-0091R-12P</a>	Rear Propeller	■
Stainless Steel	3	15-1/2"	15	<a href="#">990C0-0091R-15P</a>	Rear Propeller	■
Stainless Steel	3	15-1/2"	16.5	<a href="#">990C0-0091R-165</a>	Rear Propeller	■
Stainless Steel	3	15-1/2"	18	<a href="#">990C0-0091R-18P</a>	Rear Propeller	■
Stainless Steel	3	15-1/2"	19.5	<a href="#">990C0-0091R-195</a>	Rear Propeller	■
Stainless Steel	3	15-1/2"	21.0	<a href="#">990C0-0091R-21P</a>	Rear Propeller	■
Stainless Steel	3	15-1/2"	22.5	<a href="#">990C0-0091R-225</a>	Rear Propeller	■
Stainless Steel	3	15-1/2"	24.0	<a href="#">990C0-0091R-24P</a>	Rear Propeller	■
Stainless Steel	3	15-1/2"	25.5	<a href="#">990C0-0091R-255</a>	Rear Propeller	■
Stainless Steel	3	15-1/2"	27.0	<a href="#">990C0-0091R-27P</a>	Rear Propeller	■
Stainless Steel	3	15-1/2"	28.5	<a href="#">990C0-0091R-285</a>	Rear Propeller	■
Stainless Steel	3	15-1/2"	30.0	<a href="#">990C0-0091R-30P</a>	Rear Propeller	■
Stainless Steel	3	15-1/2"	31.5	<a href="#">990C0-0091R-315</a>	Rear Propeller	■
Stainless Steel	3	15-1/2"	12	<a href="#">990C0-0090F-12P</a>	Front Propeller	■
Stainless Steel	3	15-1/2"	15	<a href="#">990C0-0090F-15P</a>	Front Propeller	■
Stainless Steel	3	15-1/2"	16.5	<a href="#">990C0-0090F-165</a>	Front Propeller	■
Stainless Steel	3	15-1/2"	18	<a href="#">990C0-0090F-18P</a>	Front Propeller	■
Stainless Steel	3	15-1/2"	19.5	<a href="#">990C0-0090F-195</a>	Front Propeller	■
Stainless Steel	3	15-1/2"	21.0	<a href="#">990C0-0090F-21P</a>	Front Propeller	■
Stainless Steel	3	15-1/2"	22.5	<a href="#">990C0-0090F-225</a>	Front Propeller	■
Stainless Steel	3	15-1/2"	24.0	<a href="#">990C0-0090F-24P</a>	Front Propeller	■
Stainless Steel	3	15-1/2"	25.5	<a href="#">990C0-0090F-255</a>	Front Propeller	■
Stainless Steel	3	15-1/2"	27.0	<a href="#">990C0-0090F-27P</a>	Front Propeller	■
Stainless Steel	3	15-1/2"	28.5	<a href="#">990C0-0090F-285</a>	Front Propeller	■
Stainless Steel	3	15-1/2"	30.0	<a href="#">990C0-0090F-30P</a>	Front Propeller	■
Stainless Steel	3	15-1/2"	31.5	<a href="#">990C0-0090F-315</a>	Front Propeller	■



## DF300B/DF350A Accessories

<a href="#">99924-29810-LPT</a>	Prop Tool
<a href="#">99000-81202</a>	Flush Kit (2017 - 2022)
<a href="#">99000-81210</a>	Flush Kit (2023 - Forward)
<a href="#">17917-87L00</a>	Flushing Attachment

## Propeller Hardware Kits

Includes the spacer, cotter key, washer and nut to secure the propeller to the shaft.

<a href="#">58540-98L00</a>	DF300B/DF350A Front
<a href="#">58640-98L00</a>	DF300B/DF350A Rear

## Development of Suzuki's First Contra-Rotating Propeller

After years of outboard design, Suzuki engineers knew that the shape of the lower unit and the design of the propeller would have a critical impact on performance. The increased power of the new engine required more powerful gears, and more powerful gears were typically larger. After considering alternatives, an innovative idea was proposed: design a contra-rotating dual propeller system. The contra-rotating propeller would certainly provide more "grip" underwater, and because contra-rotating propellers distribute the engine torque evenly over the two propellers, the torque per propeller decreases and gear diameter can be reduced. A reduction in gear diameter could then lead to the design of a smaller, more hydrodynamic gear case.



# REPAIR KITS & ANODES



## Gear Case Seal Kit

Part Number	Application	Years
25700-95D03	DT25C/30C/DF25/30 (except V-Twin)	
25700-95J00	DF25 V-Twin	All
25700-88L03	DT40C/DF40/50/40A/50A/60A	All
25700-99E00	DF60/70	2001 - 2010
25700-87L01	DF75A/90A	2009-Current
25700-90J01	DF90/115	2001-2011
25700-92J00	DF140/115A/140A/115B/140B	All
25700-93J00	DF150/175/200/200AP/225/250	All
25700-98J01	DF250SS/300	All
25700-93L02	DF250AP/300AP	All
25700-98L04	DF300B/350A	2017-2022
25700-87M10	DF300B/300BMD/350A/350AMD	2023-Current



## Carburetor Repair Kit

Part Number	Application	Years
13910-89J01	DF25/30 (Except V-Twin)	All
13910-94400	DF40/65/85/140	All
13910-94701	DF55/75/115	All
13910-87D01	V6, 2-Stroke Models	All



## Water Pump Repair Kit

### FOUR STROKE

Part Number	Application	Years
17400-986L2	DF4/6	2002 - 2010
	DF4/6	2011 - 2016
	DF4A/6A	2017 - Current
17400-93951	DF9.9/15	1997 - 2006
17400-94J00	DF9.9/15	2007 - 2013
17400-99J20	DF9.9A	ALL
	DF9.9B/15A/20A	2013 - Current
17400-95J03	DF25 V-Twin	2006 - 2010
17400-96354	DF25/30	ALL
17400-94L21	DF25A/30A	2015 - Current
17400-96354	DF40/50	1999 - 2010
17400-88L01	DF40A/50A/60A	2011 - Current
17400-99E12	DF50AVT/60AVT	ALL
17400-87E04	DF60/70	1998 - 2007
17400-99E01	DF60/70	2008 - 2009
17400-87L04	DF75A/80A/90A	2009 - Current
17400-90J20	DF90/115/140	2001 - 2005
17400-92J00	DF90/115/140	2006 - 2008
17400-92J23	DF115/115A/140/140A	2009 - Current
17400-96J04	DF200/225/250 (V6)	2006 - Current
17400-93J05	DF150A/175A/200A	2004 - Current
17400-98J05	DF200/225/250 (V6)	2008 - Current
	DF250SS	2007 - Current
17400-98L03	DF300B/350A	2017 - 2022
17400-87M00	DF300B/300BMD/350A/350AMD	2023 - Current

## ALUMINUM ANODES FOR BRACKISH AND/OR SALTWATER



55321-87J01	All Models	All Years
-------------	------------	-----------

## ZINC ANODES FOR SALTWATER USE ONLY



11281-94400	DF60/70	'98 - '01
-------------	---------	-----------



55321-90L00	DF9.9/15	'97 - '10
-------------	----------	-----------



55125-90J01	DF90-140	'98 - Current
-------------	----------	---------------



55125-98J00-0EP	DF200/225/250/300	Trim Tab
-----------------	-------------------	----------



55125-95500	DF40/50	'99 - '10
	DF40A/50A/60A	'10 - Current



55125-98J10	DF250SS	'08 - Current
-------------	---------	---------------



55125-93L00-0EP	DF250AP/300AP	'13 - Current
-----------------	---------------	---------------



55125-92J00	DF115/140	'08 - Current
-------------	-----------	---------------



55125-96310	DF25/30	'00 - '10
	DF25 V-Twin	'06 - Current



55300-95500	DF9.9/15	'04 - '10
		'96 - '03
	DF40/50	'99 - '10
	DF40A/50A/60A	'10 - Current



55320-95311	DF25 /30	'00 - '07
	DF40/50	'99 - '08
	DF40A/50A/60A	'10 - Current
	DF60/70	'01 - '08
	DF150/175	'06 - Current
	DF200/225/250/300	'04 - Current



55320-94900	DF60 thru 300	'01 - '10
-------------	---------------	-----------



55321-90J01	DF60-140	'98 - '08
-------------	----------	-----------



55321-93J01*	DF300B/DF350A	All models
*Also requires P/N 09116-06236 (Bolt)		



55321-939L0	DF9.9/15	'97 - '08
-------------	----------	-----------

## ECSTAR® Marine 4-Cycle Engine Oil

Ecstar V7000 Semi-Synthetic Oil is specifically formulated for the Ultimate Outboard Motor. Premium mineral oils and synthetic lubricants, with an additive profile designed to stand up to harsh conditions on the water. FC-W Certified. See chart for recommended oil filter and capacities.

<b>990C0-01E30-QUA</b>	1 QT. Bottle	12/Case
<b>990C0-01E30-GLN</b>	1 GL Bottle	4/Case
<b>990C0-01E30-DRU</b>	55 Gallon Drum	

Dealers: Engine Oil must be ordered separately from all Parts and Accessories. See Suzuki Connect for instructions.



## Four-Stroke

Gear oil capacities are for reference only. Please consult your engine owners manual for gear oil change procedure and specifications.

Engine Model	Gear Case Oil Capacity (ml)	Gear Case Oil Capacity (oz)
DF4/6	190 ml.	6.4 oz.
DF9.9/15	175 ml.	5.9 oz.
DF9.9B/15A/20A	250 ml.	8.4 oz.
DF25/30	230 ml.	7.8 oz.
DF25A/30A	330 ml.	11.1 oz.
DF25V-Twin	420 ml.	14.2 oz.
DF40A/50A/60A/40/50	610 ml.	20.6 oz.
DF60/70	1050 ml.	35.5 oz.
DF75A/90A	850 ml.	28.7 oz.
DF90/115/140	1050ml.	35.5 oz.
DF115A/115B/140A/140B	1050 ml.	35.5 oz.
DF150/175/200/225/250/250S	1100 ml.	37.2 oz.
DF250AP/300/300AP	1100 ml.	37.2 oz.
DF300B/350A (2017 - 2022)	3218 ml.	108.8 oz.
DF300B/350A (2023 - Forward)	2895 ml.	101.9 oz.



## Gear Lube Pump

The Gear Lube Pump is developed to make changing the gear case oil in your lower units a whole lot easier. The pump is specially designed to fit and function with our Hypoid Gear Oil bottles and Suzuki outboard lower units. Includes 8mm and 10mm adapters.

**990C0-99002**



## Hypoid Gear Oil

Hypoid Gear Oil is formulated to Suzuki specifications. Available in two convenient sizes: 1 quart bottle and 5 gallon pail. See chart for recommended gear oil capacities.

<b>990A0-01E81-01Q</b>	1 Quart	12/Case
<b>990A0-01E81-05G</b>	5 Gallon Pail	



## Fuel Conditioner & Water Remover

Removes water and helps clean fuel system. Helps to keep injectors and carburetors clean and corrosion free. Dissolves gum and varnish and helps prevent fuel line freezing. Use regularly for best result. 12oz bottle treats 3-12 gallons of gasoline.

**990A0-02E30-12Z** 12 Fluid oz. Bottle 12/Case



## Fuel Injector Cleaner

Quickly cleans deposits in gasoline injectors and helps to avoid costly injector replacement. Also helps prevent deposit build up with regular use and will not harm catalytic converters or oxygen sensors. Mix ratio 1:1, 12oz bottle treats 12 gallons of gasoline.

**990A0-02E25-12Z** 12 Fluid oz. Bottle 12/Case

## Performance Low VOC Cleaner

Blasts away brake fluid, dirt and contaminants quickly and easily with no residue. Helps stop annoying brake squeal and chatter. Cleans disc and drum assemblies, including springs, rotors and pads. Great for your boat trailer!

**990A0-04E16-15Z** 14 oz. Can 12/Case



## Bond 1207B

1207B is used for sealing crankcases due to its outstanding resistance to heat and oil.

**990A0-06E70-03Z** 3.5 oz. Tube



## Thread Locks

Prevents nuts and bolts from vibrating loose. Made with the same compounds used to assemble Suzuki Products at the factory. Four strengths for different applications. Easy to use and store in individual 10cc containers with different colors for quick identification.

<b>990A0-06E33-10C</b>	1333B Medium Strength Bearing and Stud Lock
<b>990A0-06E03-10C</b>	1303 High Strength Retaining Type
<b>990A0-06E42-10C</b>	1342 Low Strength Frequent Repair
<b>990A0-06E60-10C</b>	1360 Medium Strength High Temperature Type



# ECSTAR

SUZUKI GENUINE OIL

# MAINTENANCE AND CARE

## Marine Maintenance Kits

Suzuki Genuine Parts & Accessories is excited to introduce our new Marine Maintenance Kits. These all inclusive kits contain everything necessary for performing the recommended service.

Models	Part Number	Year
DF2.5	17400-97820	2006-2011
DF2.5	17400-97810	2012-Current
DF4/6	17400-91860	2002-2010
DF4/6	17400-91830	2011-2016
DF4A/6A	17400-91891	2017-Current
DF9.9A	17400-99841	2010-Current
DF9.9/15	17400-94810	2011-2013
DF9.9B/15A/20A	17400-89812	2013-Current
DF25/30	17400-89822	2001-2010
DF25 V-Twin	17400-95872	2006-2010
DF25A/30A	17400-94824	2015-Current
DF40/50	17400-87822	Late 2006-2010
DF60	17400-99852	Late 2009 Only
DF60/70	17400-99871	2007 Only
DF60/70	17400-99861	2008-Early 2009
DF40A/50A/60A	17400-88813	2010-Current
DF50AV/60AV	17400-88822	2014-Current
DF75A/80A/90A	17400-87813	2020-Current
DF115	17400-92842	2010-2012
DF140	17400-92852	2010-2012
DF115A/140A/115SS	17400-92823	2013-Current
DF115B/DF140B/G Models	99100-99L00	2020-Current
DF150/175/150SS	17400-96824	2006-Current
DF150A/175A/200A	17400-96833	2016-Current
DF200/225/250 - V6	17400-93855	2011-Current
DF250AP/300AP/250SS	17400-98865	2011-Current
DF300B/350A	17400-98873	2017-Current
Kit Contents*	Oil Filter	
	Spark Plugs	
	Water Pump Kit	
	Fuel Filter	
	Water Pump Case Sleeve	
	Anodes	
	Cotter Pin	
Gaskets		
O-Ring		

\*Kit Contents will vary slightly. See last two pages for specific kit contents

## Bulk Oil Filters

All Bulk Packs contain 24 oil filters. They are not individually wrapped. Only meant for service departments, not resale.

Oil Filter Part Number	Bulk Pack Part Number
16510-61A33	16510-61833-B24
16510-82703	16510-82803-B24
16510-87J01	16510-87802-B24
16510-96J11	16510-96802-B24



## Oil Filters

Oil filter part numbers by engine model. Engine oil capacities are for reference only. Please consult your engine owners manual for oil change procedure.

Models	Filter Part Number	Years	Oil Capacity w/out Filter L/QT	Oil Capacity w/Filter L/QT
DF4A/6A	16510-16H11	2017-Current	0.7/0.74	0.7/0.74
DF9.9T/9.9TH/9.9B/15/15A/20A	16510-45H10	2011-Current	1.0/1.1	1.1/1.2
DF9.9A	16510-05240	ALL	0.8/0.85	0.9/0.95
DF25/30	16510-87J01	ALL	1.5/1.6	1.6/1.7
DF25 V-Twin	16510-87J01	2006-2010	1.5/1.6	1.8/1.9
DF25A/30A	16510-87J01	2015-Current	1.5/1.6	1.6/1.7
DF40/50	16510-87J01	ALL	2.2/2.3	2.4/2.5
DF60/70	16510-87J01	ALL	4.5/4.8	4.8/5.1
DF40A/50A/60A	16510-87J01	2010-Current	2.7/3.0	2.9/3.2
DF75A/90A	16510-61A21-MHL	2009-2010	4.2/4.0	4.4/4.7
DF75A/90A	16510-61A33	2011-Current	4.2/4.0	4.4/4.7
DF90/115	16510-61A21-MHL	2001-2008	5.5/5.8	5.7/6.0
DF115A/115B/140A/140B/115SS	16510-61A33	2013-Current	5.5/5.8	5.7/6.0
DF140	16510-82703	2002-2012	5.5/5.8	5.7/6.0
DF150A/150SS/175A/200SS/200A	16510-96J11	2016-Current	8.0/8.5	8.5/9.0
DF200(V6)/225/250	16510-96J11	ALL	8.0/8.5	8.2/8.7
DF225T/250T/250SS/250AP/300AP	16510-96J11	2011-Current	8.0/8.5	8.2/8.7
DF300B/350A/300BMD/350AMD	16510-96J11	2017-Current	7.8/8.2	8.0/8.5

## Recommended Oil Change Periods

1st 20 hours	Every 100 hours	Every 200 hours
<b>Oil &amp; Filter</b>	<b>Oil</b>	<b>Oil &amp; Filters</b>

## Oil Change Necessities/Oil Drain Plug Gasket

Engine Model	Drain Plug	Drain Plug Gasket
DF2.5	09248-10008	09168-10022
DF4/6	09248-10008	09168-10022
DF4A/6A	09248-12009	09168-12017
DF9.9A	09248-12009	09168-12017
DF9.9B/15A/20A	09248-12009	09168-12017
DF25/25 V-Twin/30	09248-12009	09168-12012
DF25A/30A	09248-12009	09168-12017
DF40/50	09248-12009	09168-12012
DF40A/50A/60A	09248-12009	09168-12012
DF60/70	09248-12009	09168-12012
DF75A/90A	09248-12009	09168-12012
DF90/115/115A/115B/140/140A/140B/G Models	09248-12009	09168-12012
DF150/150A/175/175A/200A	09248-12009	09168-12012
All V6 Models (Includes DF300B/350A)	09248-12009	09168-12012



## Flush Hose Attachment

See Owners Manual or Service Manual on how to use the flush attachments.

55181-95200	DF4 - DF15
17917-87L00	DF9.9A - 350A
99000-81210	DF300B/325A/350A/300BMD/350AMD (2023~)
99000-81220	DF250S (2023~)

## Spark Plugs



Models	Part Number	Year	Spark Plug	Models	Part Number	Year	Spark Plug
DF2.5	09482-00406	ALL	CR6HSA	DF40/50	09482-00446	ALL	DCPR6E
DF4/6	09482-00299	2003-2010	BPR6ES	DF60/70	09482-00299	ALL	BPR6ES
DF4/6	09482-00L04	2011-2016	CPR6EA-9	DF40A/50A/60A	09482-00446	2010-Current	DCPR6E
DF4A/6A	09482-00L04	2017-Current	CPR6EA-9	DF75A/90A	09482-00446	ALL	DCPR6E
DF9.9/15	09482-00446	1996-2003	DCPR6E	DF90, ALL DF115/140	09482-00427	ALL	BK6RE
DF9.9/15	09482-00427	2004-2011	BKR6E	DF115BSS/115B/140B	09482-00649	2022-Current	LK6RE
DF9.9A	09482-00528	ALL	CR6E	DF150/175	09482-00427	2006-2018	BK6RE
DF9.9B/15A/20A	09482-00L04	2013-2017	CPR6EA-9	DF150A/175A/200A	09482-00649	2019-Current	LK6RE
DF9.9B/15A/20A	09482-00661	2018-Current	MR6K-9	DF150AP/175AP/200AP	09482-00649	ALL	LK6RE
DF25 V-Twin	09482-00427	2006-2010	BKR6E	DF200(V6)/225/250	09482-00427	ALL	BK6RE
DF25/30	09482-00446	ALL	DCPR6E	DF250SS	09482-00427	ALL	BK6RE
DF25A/30A	09482-00L04	2015-2018	CPR6EA-9	DF300/300AP	09482-00427	ALL	BK6RE
DF25A/30A	09482-00661	2019-Current	MR6K-9	DF300B/350A	09482-00642	ALL	ILZKR7D8



## Suzuki Super Grease

Multi-purpose, lithium grease is heat and water resistant, anti-wear.

99000-25480



## Silicone Seal

A clear adhesive sealer with a silicone base.

93691-80030 3.5 oz. Tube



## Water Resistant Grease

Use on oil seal lips, links and joints of the engine that are below the waterline.

99000-25520 8.8 oz. Tube



## Touch-Up Paint

If you need touch-up paint for your outboard, please visit [www.colorrite.com](http://www.colorrite.com).

Black Outboards	Code
Shadow Black Metallic	0EP
Nebular Black	YAY
Metallic Matte Black	YKV

White Outboards	Code
Super Cool White	QTN
Cool White	Y5S
Pearl Anniversary White	QUA

Other	Code
2 Stroke Charcoal	0ED
Warm Silver - DF300B/350A Trim	20H



## Lower Unit Drain Plug Gaskets

Part Number	Models
59178-97J00	DF25A/30A
09168-10022	DF40-140B (excluding 70/90)
09168-10038	DF70A-90A, DF150-300A

# ENGINE COVERS

## Engine Covers

Custom-fit Engine Covers feature Sunbrella® UV resistant, water-repellent fabric and silk screened Suzuki graphics. Black covers available late Spring / early Summer! Sunbrella is a registered trademark of Glen Raven, Inc. Black cover available late Spring / Early Summer 2026.

Gray Cover	NEW Black Cover	For	Notes
990C0-65012	990C0-75020	DF2.5	All model years
990C0-65021	990C0-75021	DF4A/6A	All model years
990C0-65022	990C0-75022	DF9.9A/9.9B/15A/20A	2012 - Current
990C0-65023	990C0-75023	DF25A/30A	All model years
990C0-65024	990C0-75024	DF40A/50A/60A	2011 - Current
990C0-65001	N/A	DF40/50	2010 and prior
990C0-65026	990C0-75026	DF70A/75A/90A	2009 - Current
990C0-65027	990C0-75027	DF115A/140A	2012 - Current
990C0-65028	990C0-75028	DF115BG/140BG	2002 - 2011
990C0-65029	990C0-75029	DF140	All model years
990C0-65030	990C0-75030	DF150/175	2006 - 2018
990C0-65031	990C0-75031	DF150AP/175AP/200AP	Will not fit 1st Gen. DF150/175
990C0-65032	990C0-75032	DF225/250/250T	Will not fit DF250AP
990C0-65033	990C0-75033	DF250AP/300/300AP	All model years
990C0-65034	990C0-75034	DF300B/350A	All model years



## Splash Covers

Suzuki vented Splash Covers are custom made, tight-fitting covers that are designed to protect the outboard engine cowlings and decals from sun, spray, salt, birds, errant fish hooks, and anything else that can compromise the factory finish while the engine is running. The Polysoft II fabric is a breathable, marine grade fabric that is 95% waterproof and 5% breathable which ensures that moisture will not be trapped under the cover. This 100% woven polyester fabric is UV stabilized to resist fading and rotting. The soft non-woven lining will not scuff or damage your cowling when installed. Splash Covers are easy to clean and will be sure to turn heads!

Black Covers	White Covers	Application
990C0-67000-BLK	N/A	Carry Bag for DF4A/DF6A (2nd Generation)
990C0-67001-BLK	N/A	DF90/DF115 (1st Generation)
990C0-67003-BLK	N/A	DF140 (1st Generation)
990C0-67002-BLK	990C0-67002-WHT	DF115A/DF140A (2nd Generation)
990C0-67012-BLK	990C0-67012-WHT	DF115B/DF140B (3rd Generation, Including BG Models)
990C0-66000-BLK	N/A	DF150SS/DF150/DF175 (1st Generation)
990C0-66002-BLK	990C0-66002-WHT	DF150A/DF175A/DF200A (2nd Generation, Including AP Models)
990C0-66001-BLK	N/A	DF225/DF250 V6 Mechanical
990C0-66003-BLK	990C0-66003-WHT	DF250AP/DF300AP
990C0-66005-BLK	990C0-66005-WHT	DF300B
990C0-66004-BLK	990C0-66004-WHT	DF350A

# APPLICATION CHARTS

## DF4/6A (2017 - Current)

Side Mount Control Box	67200-91J32
Remote Control Attatching Kit	67101-97L01
Battery Charging Kit	32000-97L10
Spark Plug (CPR6EA-9)	09482-00L04
Water Pump Repair Kit	17400-986L2
Oil Filter	16510-16H11
Maintenance Kit	17400-91891
Flush Hose Attatchment	55181-95200

## DF9.9A (2010 - 2012)

Side Mount Control Box	67200-91J32	
Remote Control Attatching Kit	67130-99J02	
Water Pump Repair Kit	17400-99J02	
Electric Starter Set	31000-99J00	
Battery Charging Kit	32000-99J00	
Oil Filter	16510-05240	'10
	16510-45H10	'11 - Current
Drag Link	67701-99J02	
Propeller Hardware Kit	57630-99J00	
Spark Plug CR6E	09482-00528	

## DF25A/30A (2015 - Current)

Side Mount Control Box	67200-93J70	w/PTT Switch, must use CAN harness
Remote Control Attatching Kit	67130-94L30	
	67130-94L13	Tiller Handle Models
Remote Control Cables	990C0-11002-0XX*	
Single Binnacle	67200-88L02	
Flush Mount Remote Control	67200-93J34	
Wire Harness 21'	36620-94L20	
Modular Ignition Panel	37803-98L00	
Single Vertical Ign. Sw. Panel Assy.	37100-98L10	
Single Horizontal Ign. Sw. Panel Assy.	37100-98L20	
Warning Buzzer	38500-93J90	
Emergency Stop Assy.	37803-98L00	
Drag Link Kit	67701-94L00	
Propeller Hardware Kit	57630-96300	
Water Pump Repair Kit	17400-94L21	
Maintenance Kit	17400-94825	
Spark Plug CPR6EA-9	09482-00L04	2015-2018
Spark Plug MR6K-9	09482-00661	2019-Current
Oil Filter	16510-87J02	

## DF9.9B/15A/20A (2013 - Current)

Side Mount Control Box	67200-93J70	w/PTT Switch, must use CAN harness
Remote Control Mounting Kit	67130-89L22	
Remote Control Cables	990C0-11002-0XX*	
Single Binnacle	67200-88L02	
Flush Mount Remote Control	67200-93J34	
Wire Harness 21'	36620-89L10	
Modular Ignition Panel	37803-98L00	
Single Vertical Ign. Sw. Panel Assy.	37100-98L10	
Single Horiz. Ign. Sw. Panel Assy.	37100-98L20	
Warning Buzzer	38500-93J90	
Emergency Stop Assy.	37803-98L00	
Drag Link Kit	67701-99J02	
Propeller Hardware Kit	57630-93901	
Water Pump Repair Kit	17400-99J20	
Maintenance Kit	17400-89812	
Spark Plug CPR6EA-9	09482-00L04	2013-2017
Spark Plug MR6K-9	09482-00661	2018-Current
Oil Filter	16510-45H10	

## DF9.9/15 (1996 - 2009)

Side Mount Control Box	67200-91J32	'05 - Current
Remote Control Attatching Kit	67130-94J12	'05 - Current
Remote Control Cables	990C0-11002-0XX*	2 req'd
Harness, Remote Control	36630-89E02***	'96 - '04
Main Harness	36620-89L00	'05 - Current
Water Pump Repair Kit	17400-93951	'96 - '06
	17400-94J00	'07 - Current
Steering Bracket Attachment	67720-93E00	
Tilt-Tube Attachment	41141-89E00	
Rectifier Set	32800-95D02	'96 - '04
	32800-94J11	'05 - Current
Rectifier Regulator	32801-94J01	'05 - Current
Battery Charging Kit	32000-94J02	'05 - Current
Choke Solenoid	38610-93E00	'96 - '04
Bolts	01550-06167	2 req'd
	31101-95D20-0EP	'96 - '03
Starter Motor Set Stator, 120W	31100-94J22	'05 - Current
	32120-94J10	'06 - Current
Flywheel, Ring Gear Type	32102-94J10	'05 - Current
Propeller Hardware Kit	57630-93900	
Drag Link Assembly	67701-93E12	'97 - Current
Spark Plug	DCPR6E	09482-00446 up to '04
	BKR6E	09482-00427 '04 - Current
	CPR6-EA-9	09482-00L04 '11 - Current
Oil Filter	DF9.9/15	16510-05240 '96 - Current
	DF9.9T/15	16510-45H10 '11 - Current

## DF/75A/90A (2009 - Current)

Side Mount Control Box	67200-93J70	w/PTT Switch, must use CAN harness
Flush Mount Control Box	67200-93J34	
Remote Control Cables	990C0-11002-0XX*	2 Req'd
Single Binnacle	67200-88L02	
Dual Binnacle	67200-88L13	
Flush Mount Remote Control	67200-93J34	
Wire Harness 16'	36620-93J80	
Wire Harness 21'	36620-93J70	
Wire Harness 26'	36620-93J90	
Power Trim/Tilt Switch	37805-88L00	
Modular Ignition Panel	37100-98L00	
Dual Ign. Sw. Panel Assy.	37100-98L30	
Single Vertical Ign. Sw. Panel Assy.	37100-98L10	
Single Horizontal Ign. Sw. Panel Assy.	37100-98L20	
Troll Mode Switch Panel	37860-98L00	
Warning Buzzer	38500-93J90	
Emergency Stop Assy.	37803-98L00	
Dual Engine Tie Bar	990C0-10006	2009-2021
Drag Link Kit	67700-87L01	
	67700-87L10	2022-Current
Tiller Handle Kit w/ Tach.	63002-87L20-YAY	2022-Current
Propeller Hardware Kit	57630-90J10	
Maintenance Kit	17400-87814	
Water Pump Repair Kit	17400-87L04	
Spark Plug DCPR6E	09482-00446	
Oil Filter	16510-61A32	

## DF115A/140A/115SS (2013-2022)

Side Mount Control Box	67200-93J70	w/PTT Switch, must use CAN harness
Flush Mount Control Box	67200-93J34	
Remote Control Cables	990C0-11002-0XX*	2 Req'd
Single Binnacle	67200-88L02	
Dual Binnacle	67200-88L12	
Flush Mount Remote Control	67200-93J34	
Wire Harness 16'	36620-93J80	
Wire Harness 21'	36620-93J70	
Wire Harness 26'	36620-93J90	
Power Trim/Tilt Switch	37805-88L00	
Modular Ignition Panel	37100-98L00	
Dual Ign. Sw. Panel Assy.	37100-98L30	
Single Vertical Ign. Sw. Panel Assy.	37100-98L10	
Single Horizontal Ign. Sw. Panel Assy.	37100-98L20	
Troll Mode Switch Panel	37860-98L00	
Warning Buzzer	38500-93J90	
Emergency Stop Assy.	37803-98L00	
Dual Engine Tie Bar	990C0-10006	
Drag Link Kit	67701-90J01	
Tiller Handle Kit w/ Tach.	63002-90J38-YAY	DF115A
Propeller Hardware Kit	57630-90J10	
Maintenance Kit	17400-92824	
Water Pump Repair Kit	17400-92J23	
Spark Plug BKR6E	09482-00427	
Oil Filter	16510-61A33	

## DF40A/50A/50AV/60A/60AV (2010 - Current)

Side Mount Control Box	67200-93J70	w/PTT Switch, must use CAN harness
Flush Mount Control Box	67200-93J34	
Remote Control Cables	990C0-11002-0XX*	2 Req'd
Single Binnacle	67200-88L02	
Dual Binnacle	67200-88L13	
Flush Mount Remote Control	67200-93J34	
Wire Harness 16'	36620-93J80	
Wire Harness 21'	36620-93J70	
Wire Harness 26'	36620-93J90	
Power Trim/Tilt Switch	37805-88L00	
Modular Ignition Panel	37100-98L00	
Dual Ign. Sw. Panel Assy.	37100-98L30	
Single Vertical Ign. Sw. Panel Assy.	37100-98L10	
Single Horizontal Ign. Sw. Panel Assy.	37100-98L20	
Troll Mode Switch Panel	37860-98L00	
Warning Buzzer	38500-93J90	
Emergency Stop Assy.	37803-98L00	
Dual Engine Tie Bar	990C0-10006	
Steering Tensioner	43770-99E03	
Drag Link Kit	67701-87J11	DF40A/50A/60A
	57630-94301	DF50AV/60AV
Propeller Hardware Kit	57630-90J10	
Tiller Handle Kit w/ Tach.	63002-88L2A-YAY	DF40A/50A/60A
	63002-88L18-YAY	DF50AV/60A/60AV
Maintenance Kit	17400-88813	DF50AV/60AV
	17400-88823	DF40A/50A/60A
Water Pump Repair Kit	17400-88L01	DF50AV/60AV
	17400-99E12	
Spark Plug DCPR6E	09482-00446	
Oil Filter	16510-87J02	

## DF115B/140B (G Models Included)

Side Mount Control Box	67200-93J70	w/PTT Switch, must use CAN harness
Flush Mount Control Box	67200-93J34	
Remote Control Cables	990C0-11002-0XX*	2 Req'd
Single Binnacle	67200-88L02	
Dual Binnacle	67200-88L12	
Flush Mount Remote Control	67200-93J34	
Wire Harness 16'	36620-93J80	
Wire Harness 21'	36620-93J70	
Wire Harness 26'	36620-93J90	
Power Trim/Tilt Switch	37805-88L00	
Modular Ignition Panel	37100-98L00	
Dual Ign. Sw. Panel Assy.	37100-98L30	
Single Vertical Ign. Sw. Panel Assy.	37100-98L10	
Single Horizontal Ign. Sw. Panel Assy.	37100-98L20	
Troll Mode Switch Panel	37860-98L00	
Warning Buzzer	38500-93J90	
Emergency Stop Assy.	37803-98L00	
Drag Link Kit	67701-90J01	
Propeller Hardware Kit	57630-90J10	
Water Pump Repair Kit	17400-92J23	
Spark Plug LKR6E	09482-00649	
Oil Filter	16510-61A33	

### Specific Application Notes:

- \* Cable is available in one foot increments from 8 to 25 feet. (example: 008 = 8 ft, 025 = 25 ft)
- \*\* Must use with one of the following Main Harnesses: 16": 36620-93J80 21": 36620-93J70 25": 36620-93J90
- \*\*\* Under-Hood Electric Start Harness



# APPLICATION CHARTS

## DF150A/150SS/175A/200A/200SS

Side Mount Control Box	67200-93J70	w/PTT Switch, must use CAN harness
Flush Mount Control Box	67200-93J34	
Remote Control Cables	990C0-11002-OXX*	2 Req'd
Single Binnacle	67200-88L02	
Dual Binnacle	67200-88L13	
Flush Mount Binnacle	67200-93J34	
Wire Harness 16'	36620-93J80	
Wire Harness 21'	36620-93J70	
Wire Harness 26'	36620-93J90	
Power Trim/Tilt Switch	37805-88L00	
Modular Ignition Panel	37100-98L00	
Dual Ign. Sw. Panel Assy.	37100-98L30	
Single Vertical Ign. Sw. Panel Assy.	37100-98L10	
Single Horizontal Ign. Sw. Panel Assy.	37100-98L20	
Troll Mode Switch Panel	37860-98L00	
Warning Buzzer	38500-93J90	
Emergency Stop Assy.	37803-98L00	
Dual Engine Tie Bar	67600-93J00	
Drag Link Kit	67701-96J00	
Propeller Hardware Kit (Watergrip)	57630-93L00	
Propeller Hardware Kit (Non-Watergrip)	57630-92E10	
Maintenance Kit	17400-96834	
Water Pump Repair Kit	17400-96J04	DF150A/175A/200A
Spark Plug BK6RE	09482-00427	
Spark Plug LK6RE	09482-00649	2019 and Newer
Oil Filter	16510-96J11	

## DF250SS Mechanical (2008 - Current)

Side Mount Control Box	67200-93J70	w/PTT Switch, must use CAN harness
Flush Mount Control Box	67200-93J34	
Remote Control Cables	990C0-11002-OXX*	2 Req'd
Single Binnacle	67200-88L02	
Dual Binnacle	67200-88L13	
Flush Mount Binnacle	67200-93J34	
Wire Harness 16'	36620-93J80	
Wire Harness 21'	36620-93J70	
Wire Harness 26'	36620-93J90	
Power Trim/Tilt Switch	37805-88L00	
Modular Ignition Panel	37100-98L00	
Dual Ign. Sw. Panel Assy.	37100-98L30	

## DF225/250 (2004 - Current)

Side Mount Control Box	67200-93J70	w/PTT Switch, must use CAN harness
Flush Mount Control Box	67200-93J34	
Remote Control Cables	990C0-11002-OXX*	2 Req'd
Single Binnacle	67200-88L02	
Dual Binnacle	67200-88L13	
Flush Mount Binnacle	67200-93J34	
Wire Harness 16'	36620-93J80	
Wire Harness 21'	36620-93J70	
Wire Harness 26'	36620-93J90	
Power Trim/Tilt Switch	37805-88L00	
Modular Ignition Panel	37100-98L00	
Dual Ign. Sw. Panel Assy.	37100-98L30	
Single Vertical Ign. Sw. Panel Assy.	37100-98L10	
Single Horizontal Ign. Sw. Panel Assy.	37100-98L20	
Troll Mode Switch Panel	37860-98L00	
Warning Buzzer	38500-93J90	
Emergency Stop Assy.	37803-98L00	
Drag Link Kit	67700-93J00	
Propeller Hardware Kit (Watergrip)	57630-93L00	
Propeller Hardware Kit (Non-Watergrip)	57630-92E10	
Maintenance Kit	16500-93J01	
Water Pump Repair Kit	17400-98J06	
Spark Plug BK6RE	09482-00427	
Oil Filter	16510-96J11	

Single Vertical Ign. Sw. Panel Assy.	37100-98L10	
Single Horizontal Ign. Sw. Panel Assy.	37100-98L20	
Troll Mode Switch Panel	37860-98L00	
Warning Buzzer	38500-93J90	
Emergency Stop Assy.	37803-98L00	
Drag Link Kit	67700-93J00	
Propeller Hardware Kit (Watergrip)	57630-93L00	
Propeller Hardware Kit (Non-Watergrip)	57630-92E10	
Maintenance Kit	16500-98J02	
Water Pump Repair Kit	17400-98J06	
Spark Plug BK6RE	09482-00427	
Oil Filter	16510-96J11	

## DF115BG/140BG/150AP/175AP/200AP

Single Engine Binnacle First Station Kit	67000-98L05	
Single Engine Binnacle Second Station Kit	67000-98LA5	
Dual Engine First Station Kit	67000-98L25	
Dual Engine Second Station Kit	67000-98LC5	
Triple Engine First Station Kit	67000-98L33	
Triple Engine Second Station Kit	67000-98LD4	
Quad Engine First Station Kit	67000-98L44	
Quad Engine Second Station Kit	67000-98LE4	
Flush Mount First Station Kit	67000-98L15	
Flush Mount Second Station Kit	67000-98LB4	
Remote Control Assembly, Single	67200-98L00	
Remote Control Assembly, Dual	67200-98L10	
Remote Control Assembly, Flush	67200-98L20	
Counter Select Connector	36612-98J20	
Dual Engine Control Panel	37120-98L00	
Triple Engine Control Panel	37120-98L10	

Quad Engine Control Panel, PORT	37120-98L20	
Quad Engine Control Panel, STBD	37120-98L30	
Vertical Switch Panel	37100-98L10	
Horizontal Switch Panel	37100-98L20	
Modular Ignition Panel	37100-98L00	
Emergency Stop Switch	37803-98L00	
Troll Mode Switch Panel	37860-98L00	
Warning Buzzer	38500-93J90	
Dual Engine Tie Bar	67600-99L00	115BG/140BG
Dual Engine Tie Bar	67600-93J00	150AP/175AP/200AP
Drag Link Kit	67701-96J00	150AP/175AP/200AP
Propeller Hardware Kit	57630-90J10	115BG/140BG
Propeller Hardware Kit	57630-93L00	150AP/175AP/200AP
Maintenance Kit	17400-96834	150AP/175AP/200AP
Spark Plug LK6RE	09482-00649	
Oil Filter	16510-61A33	115BG/140BG
Oil Filter	16510-96J11	150AP/175AP/200AP

## DF250AP/300AP

Single Engine Binnacle First Station Kit	67000-98L05
Single Engine Binnacle Second Station Kit	67000-98LA5
Dual Engine First Station Kit	67000-98L25
Dual Engine Second Station Kit	67000-98LC5
Triple Engine First Station Kit	67000-98L33
Triple Engine Second Station Kit	67000-98LD4
Quad Engine First Station Kit	67000-98L44
Quad Engine Second Station Kit	67000-98LE4
Flush Mount First Station Kit	67000-98L15
Flush Mount Second Station Kit	67000-98LB4
Remote Control Assembly, Single	67200-98L00
Remote Control Assembly, Dual	67200-98L10
Remote Control Assembly, Flush	67200-98L20
Counter Select Connector	36612-98J20
Dual Engine Control Panel	37120-98L00
Triple Engine Control Panel	37120-98L10

Quad. Engine Control Panel, PORT	37120-98L20
Quad. Engine Control Panel, STBD.	37120-98L30
Vertical Switch Panel	37100-98L10
Horizontal Switch Panel	37100-98L20
Modular Ignition Panel	37100-98L00
Emergency Stop Switch	37803-98L00
Troll Mode Switch Panel	37860-98L00
Warning Buzzer	38500-93J90
Drag Link Kit	67700-93J00
Propeller Hardware Kit (Watergrip)	57630-93L00
Propeller Hardware Kit (Non-Watergrip)	57630-92E10
Maintenance Kit	16500-98J02
Water Pump Repair Kit	17400-98J06
Spark Plug BK6RE	09482-00427
Oil Filter	16510-96J11

## DF300B/300BMD/350A/350AMD

Single Engine Binnacle First Station Kit	67000-98L05
Single Engine Binnacle Second Station Kit	67000-98LA5
Dual Engine First Station Kit	67000-98L25
Dual Engine Second Station Kit	67000-98LC5
Triple Engine First Station Kit	67000-98L33
Triple Engine Second Station Kit	67000-98LD4
Quad Engine First Station Kit	67000-98L44
Quad Engine Second Station Kit	67000-98LE4
Flush Mount First Station Kit	67000-98L15
Flush Mount Second Station Kit	67000-98LB4
Remote Control Assembly, Single	67200-98L00
Remote Control Assembly, Dual	67200-98L10
Remote Control Assembly, Flush	67200-98L20
Counter Select Connector	36612-98J20
Dual Engine Control Panel	37120-98L00

Triple Engine Control Panel	37120-98L10
Quad. Engine Control Panel, PORT	37120-98L20
Quad. Engine Control Panel, STBD.	37120-98L30
Vertical Switch Panel	37100-98L10
Horizontal Switch Panel	37100-98L20
Modular Ignition Panel	37100-98L00
Emergency Stop Switch	37803-98L00
Troll Mode Switch Panel	37860-98L00
Warning Buzzer	38500-93J90
Propeller Hardware Kit (Front)	58540-98L10
Propeller Hardware Kit (Rear)	58640-98L10
Maintenance Kit (2017 - 2022)	17400-98875
Water Pump Repair Kit (2017 - 2022)	17400-98L04
Water Pump Repair Kit (~23 - Newer)	17400-87M01
Spark Plug ILZKR7D8	09482-00642
Oil Filter	16510-96J11

### Specific Application Notes:

\* Cable is available in one foot increments from 8 to 25 feet. (example: 008 = 8 ft, 025 = 25 ft)

\*\* Must use with one of the following Main Harnesses: 16": 36620-93J80 21": 36620-93J70 25": 36620-93J90

\*\*\* Under-Hood Electric Start Harness



# MAINTENANCE KITS

SUZUKI highly recommends you to replace your outboard motor with Maintenance Kits every 100 hours or 1 year, whichever comes first. Maintenance kit picture is for reference only. Kit contents vary by model, please check kit listings for actual contents.



Model Year	Kit Part Number	Part Number	Part Name	QTY
DF2.5 '12-Current	17400-97810	09168-10022	GASKET(10X17X1.5)	1
		09202-02006	PIN(2.9X14)	1
		09204-03003	PIN	1
		09280-33005	O RING(D:1.9,ID:32.7)	1
		09204-03003	PIN	1
		09280-33005	O RING(D:1.9,ID:32.7)	1
		09482-00406	PLUG, SPARK(CR6HSA)	1
		17461-97JMO	IMPELLER, WATER PUMP	1
		17471-97JLO	PANEL, PUMP CASE UNDER	1
		17472-97JLO	GASKET, PUMP CASE PANEL	1
		55321-87J01	ANODE, PROTECTION	1
		59178-97J00	GASKET, DRAIN PLUG	2
DF4A/6A '17-Current	17400-91891	17400-986L2	KIT, WATER PUMP REPAIR	1
		09168-12017	GASKET(12X17X1)	1
		09204-03003	PIN	1
		09280-39002	O RING(D:2,ID:38.5)	1
		09482-00L04	PLUG, SPARK(CPR6EA-9)	1
		16510-16H11	FILTER, ENGINE OIL	1
		17412-91JLO	PANEL, WATER PUMP CASE UPR	1
		17413-91JLO	SLEEVE, WATER PUMP CASE	1
		44330-13H00	FILTER, FUEL	1
		55321-87J01	ANODE, PROTECTION	1
		55321-95J00	ANODE, PROTECTION	1
		59178-97J00	GASKET, DRAIN PLUG	2
DF9.9A '10-Current	17400-99841	17400-99J20	KIT,WATER PUMP REPAIR	1
		09168-12017	GASKET(12X17X1)	1
		09204-02004	PIN	1
		09280-13004	O RING(D:1.9,ID:13)	1
		09280-22019	O RING(D:1.9,ID:21.8)	1
		09280-54001	O RING(D:2.4,ID:52.6)	1
		09482-00528	PLUG, SPARK(CR6E)	2
		15410-98500	FILTER, FUEL	1
		16510-45H10	FILTER ASSY, ENG OIL	1
		55321-87J01	ANODE, PROTECTION	2
		59178-97J00	GASKET, DRAIN PLUG	2
		DF9.9B/15A/20A '13-Current	17400-89812	17400-99J20
09168-12017	GASKET(12X17X1)			1
09204-02004	PIN			1
09280-13004	O RING(D:1.9,ID:13)			1
09280-22019	O RING(D:1.9,ID:21.8)			1
09280-54001	O RING(D:2.4,ID:52.6)			1
09482-00661	PLUG,SPARK(MR6K-9)			2
15410-87L00	FILTER,FUEL			1
16510-45H10	FILTER ASSY,ENG OIL			1
55321-87J01	ANODE,PROTECTION			2
59178-97J00	GASKET,DRAIN PLUG			2
*2013 - 2017 requires Spark Plug CPR6EA-9, Suzuki Part Number 09482-00L04				
DF25A/30A '15-Current	17400-94825	17400-94L21	KIT, WATER PUMP REPAIR	1
		09168-12017	GASKET(12X17X1)	1
		09204-03003	PIN	1
		09280-22019	O RING(D:1.9,ID:21.8)	1
		09482-00661	PLUG, SPARK(MR6K-9)	3
		15410-87L00	FILTER, FUEL	1
		16510-87J02	FILTER ASSY,OIL	1
		55321-87J01	ANODE,PROTECTION	5
*2015 - 2018 requires Spark Plug CPR6EA-9, Suzuki Part Number 09482-00L04				

Model Year	Kit Part Number	Part Number	Part Name	QTY
DF40A/50A/60A '10-Current	17400-88813	17400-88L01	KIT, WATER PUMP REPAIR	1
		09168-10022	GASKET(10X17X1.5)	2
		09168-12012	GASKET(12.5X20X2.5)	1
		09204-03003	PIN	1
		09280-22019	O RING(D:1.9,ID:21.8)	2
		09482-00446	PLUG,SPARK(NGK DCPR6E)	3
		15410-88L00	FILTER,FUEL	1
		16510-87J02	FILTER ASSY,OIL	1
DF50AV/60AV 2014-Current	17400-88823	17400-99E12	KIT, WATER PUMP REPAIR	1
		09168-10022	GASKET(10X17X1.5)	2
		09168-12012	GASKET(12.5X20X2.5)	1
		09204-03003	PIN	1
		09280-22019	O RING(D:1.9,ID:21.8)	2
		09482-00446	PLUG,SPARK(NGK DCPR6E)	3
		15410-88L00	FILTER,FUEL	1
		16510-87J02	FILTER ASSY,OIL	1
DF75A /80A/90A 2020-Current	17400-87833	17400-87L04	KIT, WATER PUMP REPAIR	1
		09168-10038	GASKET(9.5X16.5X2)	2
		09168-12012	GASKET(12.5X20X2.5)	1
		09204-03003	PIN	1
		09280-22019	O RING(D:1.9,ID:21.8)	3
		09482-00446	PLUG,SPARK(NGK DCPR6E)	4
		15412-92J00	FILTER,FUEL	1
		16510-61A33	FILTER ASSY,OIL WAKO	1
DF115B/DF140B (Including G Models) '20-Current	99100-99L01	55321-87J01	ANODE,PROTECTION	3
		17400-92J23	KIT,WATER PUMP REPAIR	1
		11265-87E10	GASKET,PROTECTION COVER	2
		15412-92J00	FILTER,FUEL	1
		16510-61A33	FILTER ASSY,OIL WAKO	1
		55321-87J01	ANODE,PROTECTION	5
		09168-10022	GASKET(10X17X1.5)	2
		09168-12012	GASKET(12.5X20X2.5)	1
DF150A/175A/ 200A/150AP/ 175AP/200AP '15-Current	17400-96834	09204-03003	PIN	1
		09280-22019	O RING(D:1.9,ID:21.8)	5
		09482-00649	PLUG,SPARK(LKR6E)	4
		15412-92J00	FILTER,FUEL	1
		16510-96J11	FILTER ASSY,OIL	1
		55321-87J01	ANODE,PROTECTION	6
		17400-93J06	KIT, WATER PUMP REPAIR	1
		09168-10038	GASKET(9.5X16.5X2)	2
DF200/225/ 250 V6 '11-Current	16500-93J01	09168-12012	GASKET(12.5X20X2.5)	1
		09204-03003	PIN	1
		09280-22019	O RING(D:1.9,ID:21.8)	7
		09482-00427	PLUG,SPARK(NGK,BKR6E)	6
		15412-93J10	FILTER ASSY,FUEL	1
		16510-96J11	FILTER ASSY,OIL	1
		55320-94900	ANODE SET,CLAMP BRACKET	1
		55321-87J01	ANODE,PROTECTION	7
DF250A/ 300AP/250SS '11-Current	16500-98J02	17400-98J06	KIT, WATER PUMP REPAIR	1
		09168-10038	GASKET(9.5X16.5X2)	2
		09168-12012	GASKET(12.5X20X2.5)	1
		09204-03003	PIN	1
		09280-22019	O RING(D:1.9,ID:21.8)	7
		09482-00427	PLUG,SPARK(NGK,BKR6E)	6
		15412-93J10	FILTER ASSY,FUEL	1
		16510-96J11	FILTER ASSY,OIL	1
DF300B/350A Including MD Models 2023-Current	17400-87840	55320-94900	ANODE SET,CLAMP BRACKET	1
		55321-87J01	ANODE,PROTECTION	8
		17400-87M01	KIT,WATER PUMP REPAIR	1
		09168-10038	GASKET(9.5X16.5X2)	3
		09168-12012	GASKET(12.5X20X2.5)	1
		09204-03003	PIN	1
		09280-22019	O RING(D:1.9,ID:21.8)	7
		09482-00642	PLUG,SPARK(NGK,ILZKR7D8)	6

## MAINTENANCE KITS FOR OLDER ENGINES ALSO AVAILABLE:

Applicable Model Year	Kit Part Number
<b>DF2.5 ('06~'11)</b>	<b>17400-97820</b>
<b>DF4/5/6 ('02~'10)</b>	<b>17400-91860</b>
<b>DF4/5/6 ('11~'16)</b>	<b>17400-91830</b>
<b>DF9.9/15 ('11~'13)</b>	<b>17400-94810</b>
<b>DF20/25 V2 ('06~)</b>	<b>17400-95873</b>
<b>DF25/30 ('01~'10)</b>	<b>17400-89823</b>
<b>DF40/50 ('06 LATE~'10)</b>	<b>17400-87823</b>
<b>DF60 ('09 LATE~'09 END)</b>	<b>17400-99853</b>
<b>DF60/70 ('07)</b>	<b>17400-99872</b>
<b>DF60/70 ('08~'09 EARLY)</b>	<b>17400-99862</b>
<b>DF70A/80A/90A ('09~'20)</b>	<b>17400-87814</b>
<b>DF100/115 ('10~'12)</b>	<b>17400-92842</b>
<b>DF115A/140A ('13~)</b>	<b>17400-92824</b>
<b>DF140 ('10~'12)</b>	<b>17400-92853</b>
<b>DF150/175 ('06~'14)</b>	<b>17400-96825</b>
<b>DF350A ('18~'22)</b>	<b>17400-98875</b>